



Four Star

wire & cable inc.

low voltage

voice & data/fiber

industrial

communication & controls



Four Star
wire & cable inc.

Four Star
wire & cable inc.
1-877-789-1626
fourstarwire.com

four star
wire & cable inc.
877-789-1626
low voltage
voice & data /fiber
industrial
communication
control
dyeing/stripping
wire twisting
custom plates/panels
custom assemblies
sound/security
USDOT 1806424

ISO 9001-2008

MISSION STATEMENT

To provide a service standard
that is unmatched in the industry,
and to continually improve our processes
to maintain our “Customer First” philosophy
with pride and integrity

“Our accomplishments of yesterday will become
our challenges today. We will strive each day to
maintain our customer’s loyalty and respect.”

p.s.



Hitachi Cable America Inc.



Amphenol



HellermannTyton



MARLINCO



customized face plates & panels



custom assemblies



audio · video · data · cable assemblies

- HDMI Cables
- VGA Cables
- S-Video Cables
- Component/Composite
- Optical Cable
- DVI-D Cables
- Adapters
- Microphone Cables
- Instrument Cables
- Speaker Cables
- Custom Snakes
- Adapters & Y Cables
- Connectivity
- Cat 5E, Cat 6 & Cat 7 Patch Cords
- Fiber Optic Patch Cords
- USB Cables
- FireWire Cables



wire, wire, wire

Four Star Wire & Cable distributes most major brands of wire and cable. This allows us to satisfy any requirements that you may have to complete your project.

unmatched inventory

Our inventory is second to none. Four Star Wire & Cable stocks millions of feet of cable in our warehouses which allows us to deliver quickly and efficiently. Our orders are processed and shipped the same day.

wire twisting, custom cutting and packaging options

Allow Four Star Wire & Cable to fulfill your company's needs. After all, your unique business needs require a unique business approach.

custom dyeing & striping

We can custom dye or stripe your wire to take the guesswork out of your installations. This process is done right here in our facility and is done to your specifications and needs.

custom laser etching/cutting

Our in-house custom laser and cutting services allows us the capabilities to create custom-cut and imprinted metal plates of any type for your installation and mobile projects.

your connection connection

A full line of compression fittings, metal casings and bushings are in stock and available for all your connection needs.

custom assemblies

All assemblies are made right here in our facility. This allows us to create and construct all of your custom audio, video and data assemblies and deliver them to you quickly and correctly.

tools, testors and ties

Four Star Wire & Cable stocks a complete line of all the tools of the trade and a variety of other peripheral products to make us your one stop for all your needs.

same day shipping

Because your order is important to you, and to us, Four Star Wire & Cable uses a state-of-the-art operating system that allows us to ship your order quickly and track it to verify that it reaches its destination.

table of contents

See our handy **Connections Charts**
located on pages 66 - 73 for
quick and efficient connection of
your next project!

★ **low voltage wire and products**

Security, Sound

Non-Plenum, Unshielded, Multi-Conductor	1-3
Non-Plenum, Shielded, Multi-Conductor	4-5
Non-Plenum, Combination Cables, Shielded, Non-Shielded	6-8
Plenum Cables, Shielded, Non-Shielded	9-12

Fire Alarm

Non-Plenum, Unshielded, Shielded	13-15
Plenum, Unshielded, Shielded	16-18
Microprocessor, Unshielded, Shielded, Non-Plenum	19-20
Microprocessor, Unshielded, Shielded, Plenum, Stranded	21-22

Coaxial

Coax Cable, Non-Plenum	23-24
Coax Cables, Plenum	25
Coax Connectors, Accessories, Tools	26-28

★ **voice & data / fiber products**

Category Cabling	29-30
Outside Phone Wire	31
Fiber Optic Cable Info	32-34
Fiber Optic Assembly Info	35

★ **industrial wire and cable**

Bare Copper	36
Building Wire (THHN, MTW, XLP-USE)	37
Hook-Up Wire (Mil-Spec, UL Styles)	38-40
High Temperature Wire	41-42
Welding, Diesel Cables	43
VNTC Control Cable	44
Tray Cable	45
Tinned Copper Braid	46
Portable Cords (SO, SJO, STO, SJTO, SOOW)	47-48
Cord Types G, GGC and W	49-50
Power Cables	51-53
Thermocouple Wire	54-55

★ network power	56-57
----------------------------------	-------

★ icc voice & data products	58-59
--	-------

★ middle atlantic products	60
---	----

★ patch cords and tools	61
--	----

★ fiber optic system	61
---------------------------------------	----

★ racks and cable management	61
---	----

★ patch panels & cross connect	61
---	----

★ hardware, datacomm, low voltage mounting plates	61
--	----

★ cable connection guide	66-73
---	-------

★ west penn cross reference	74
--	----

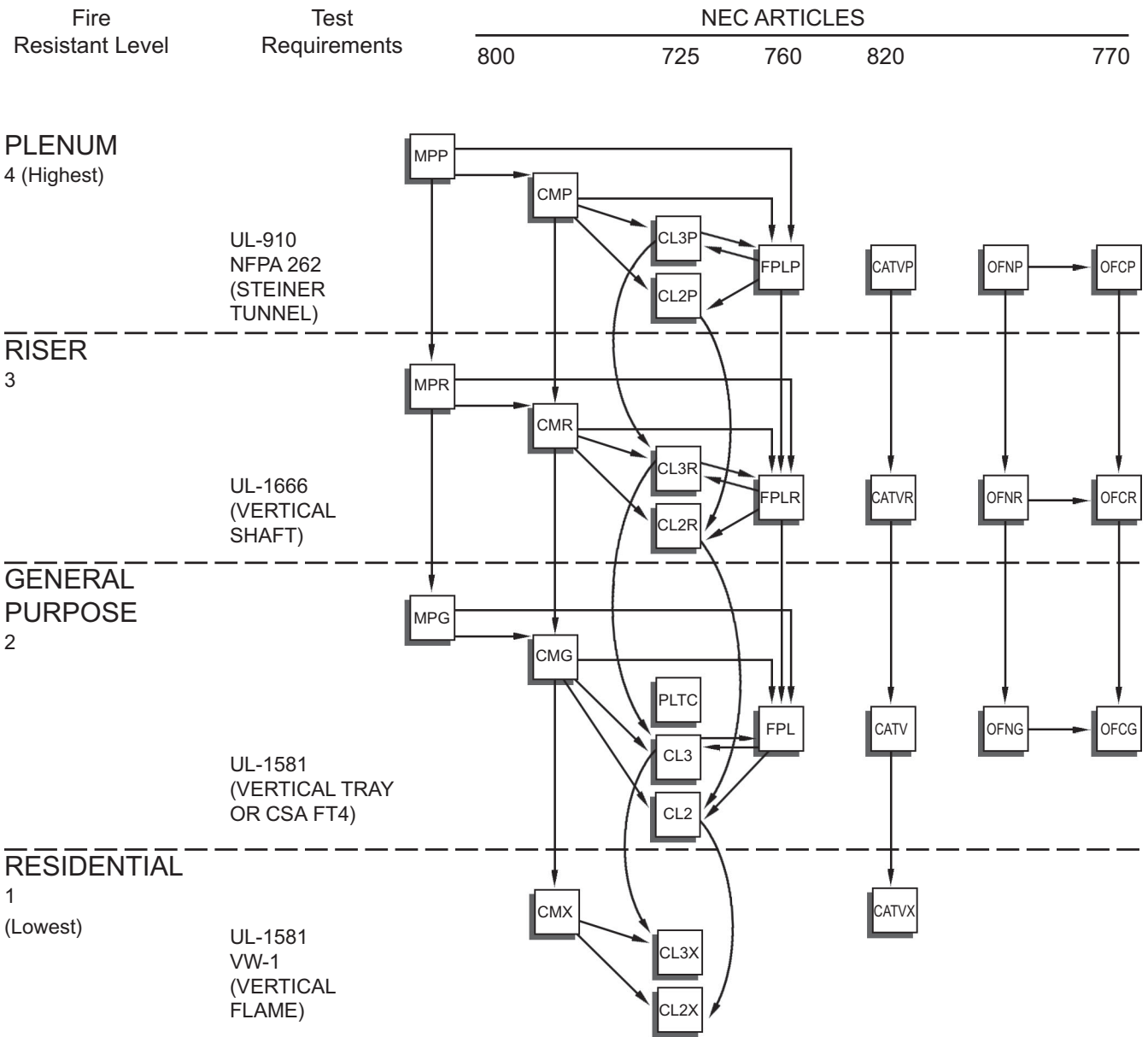


Toll Free...MI - 877-789-1626

TN - 877-853-8106

cable substitution chart

per 1996 NEC**



—————> Cables indicated can be substituted

- | | |
|--|--|
| TYPES: MPP, MPR, MPG, MP | = Multipurpose Cables |
| TYPES: CMP, CMR, CMG, CM, CMX | = Communications Cables |
| TYPES: CL3P, CLR3, CL3, CL3X, CL2P, CL2R, CL2X | = Class 2 and Class 3 Remote-Control, Signaling and Power Limited Cables |
| TYPES: FPLP, FPLR, FPL | = Power Limited Fire Alarm Cable |
| TYPES: CATVP, CATVR, CATV, CATVX | = Community Antenna Television and Radio Distribution Cables |
| TYPES: OFNP, OFNR, OFNG, OFN | = Nonconductive Optical Fiber Cables |
| TYPES: OFCP, OFCR, OFCG, OFC | = Conductive Optical Fiber Cables |
| TYPES: PLTC | = Power Limited Tray cables |

** National Electrical Code and NEC are registered trademarks of the National Fire Protection Association, Inc. Quincy, MA.

Toll Free...MI - 877-789-1626
TN - 877-853-8106



unshielded • multi conductor

Riser Rated

22 Awg - Solid

PART NUMBER	CONDUCTOR	NOMINAL O.D.	APPROX. WEIGHT
F3002	2	.108	7
F3004	4	.125	13
F3006	6	.148	15
F3008	8	.160	23
F3010	10	.187	29
F3012	12	.193	34
F3015	15	.225	44

Description:

- Solid/Stranded bare copper conductors
- Color coded PVC insulation
- PVC Jacket
- UL Subject 13, Type CL3R, NEC Article 725
- UL Subject 444, Type CMR NEX Article 800
- Available with a Striped Outer Jacket

Application:

- Security Systems
- Intercom Systems
- Signal Systems
- Audio & Sound
- Control Circuit
- Data Transmission

Riser Rated

22 Awg - 7/30 Stranding

PART NUMBER	CONDUCTOR	NOMINAL O.D.	APPROX. WEIGHT
F3102	2	.116	8
F3103	3	.120	10
F3104	4	.134	14
F3105	5	.146	16
F3106	6	.159	19
F3108	8	.172	25
F3110	10	.212	32
F3112	12	.219	37
F3115	15	.242	42
F3120	20	.278	62
F3125	25	.308	76



unshielded • multi conductor

Riser Rated

20 Awg - 7/28 Stranding

PART NUMBER	CONDUCTOR	NOMINAL O.D.	APPROX. WEIGHT
F3202	2	.134	11
F3203	3	.156	20
F3204	4	.171	24
F3205	5	.187	28
F3206	6	.197	32
F3207	7	.213	39
F3208	8	.229	43
F3209	9	.249	48
F3210	10	.258	56
F3212	12	.296	71
F3215	15	.262	72

Description:

- Solid/Stranded bare copper conductors
- Color coded PVC insulation
- PVC Jacket
- UL Subject 13, Type CL3R, NEC Article 725
- UL Subject 444, Type CMR NEX Article 800
- Available with a Striped Outer Jacket

Application:

- Security Systems
- Intercom Systems
- Signal Systems
- Audio & Sound
- Control Circuit
- Data Transmission

Riser Rated

18 Awg - 7/26 Stranding

PART NUMBER	CONDUCTOR	NOMINAL O.D.	APPROX. WEIGHT
F3302	2	.158	16
F3303	3	.168	22
F3304	4	.184	29
F3305	5	.213	38
F3306	6	.232	44
F3307	7	.241	50
F3308	8	.252	57
F3309	9	.272	64
F3310	10	.306	74
F3312	12	.316	87
F3315	15	.351	107

Toll Free...MI - 877-789-1626
TN - 877-853-8106



unshielded • multi conductor

Riser Rated

16 Awg - 19/29 Stranding

PART NUMBER	CONDUCTOR	NOMINAL O.D.	APPROX. WEIGHT
F3402	2	.186	24
F3404	4	.227	46

Description:

- Solid/Stranded bare copper conductors
- Color coded PVC insulation
- PVC Jacket
- UL Subject 13, Type CL3R, NEC Article 725
- UL Subject 444, Type CMR NEX Article 800
- Available with a Striped Outer Jacket

Riser Rated

14 Awg - 19/27 Stranding

PART NUMBER	CONDUCTOR	NOMINAL O.D.	APPROX. WEIGHT
F3502	2	.234	38
F3504	4	.284	72

Application:

- Security Systems
- Intercom Systems
- Signal Systems
- Audio & Sound
- Control Circuit
- Data Transmission

Riser Rated

12 Awg - 19/25 Stranding

PART NUMBER	CONDUCTOR	NOMINAL O.D.	APPROX. WEIGHT
F3602	2	.278	61
F3604	4	.308	96



shielded • multi conductor

Riser Rated

22 Awg - 7/30 Stranding

PART NUMBER	CONDUCTOR	NOMINAL O.D.	APPROX. WEIGHT
F1800	2	.120	10
F1803	3	.128	13
F1804	4	.137	15
F1805	5	.150	18
F2659	6	.163	21
F2660	8	.176	27
F2661	10	.216	34
F2637	12	.223	40
F2638	15	.246	48

Description:

- Solid/Stranded bare copper conductors
- Color coded PVC insulation
- PVC Jacket
- UL Subject 13, Type CL3R, NEC Article 725
- UL Subject 444, Type CMR NEX Article 800
- Available with a Striped Outer Jacket
- Available with Tinned Copper

Application:

- Security Systems
- Intercom Systems
- Signal Systems
- Audio & Sound
- Control Circuit
- Data Transmission

Riser Rated

20 Awg - 7/28 Stranding

PART NUMBER	CONDUCTOR	NOMINAL O.D.	APPROX. WEIGHT
F1822	2	.138	13
F1823	3	.149	17
F1824	4	.160	22
F1825	5	.175	27
F1826	6	.185	33
F1827	12	.261	59
F1828	15	.300	74
F1829	20	.375	114

Toll Free...MI - 877-789-1626
TN - 877-853-8106



shielded • multi conductor

Riser Rated

18 Awg - 7/26 Stranding

PART NUMBER	CONDUCTOR	NOMINAL O.D.	APPROX. WEIGHT
F1830	2	.162	18
F1833	3	.172	25
F1834	4	.188	32
F1835	5	.217	40
F2693	6	.236	53
F2694	8	.253	59
F1839	9	.275	67
F2695	10	.310	77
F2696	12	.305	87
F2697	15	.359	126

Description:

- Solid/Stranded bare copper conductors
- Color coded PVC insulation
- PVC Jacket
- UL Subject 13, Type CL3R, NEC Article 725
- UL Subject 444, Type CMR NEX Article 800
- Available with a Striped Outer Jacket
- Available with Tinned Copper

Application:

- Security Systems
- Intercom Systems
- Signal Systems
- Audio & Sound
- Control Circuit
- Data Transmission

Riser Rated

16 Awg - 19/24 Stranding

PART NUMBER	CONDUCTOR	NOMINAL O.D.	APPROX. WEIGHT
F1842	2	.190	30
F1843	3	.231	50
F1844	4	.233	51

Riser Rated

14 Awg - 19/27 Stranding

PART NUMBER	CONDUCTOR	NOMINAL O.D.	APPROX. WEIGHT
F1852	2	.238	47
F1854	4	.269	60

Riser Rated

12 Awg - 19/25 Stranding

PART NUMBER	CONDUCTOR	NOMINAL O.D.	APPROX. WEIGHT
F1862	2	.286	70



multi conductor/multi-pair • combination cable

Sound & Audio

22 Awg

PART NUMBER	CONDUCTOR	NOMINAL O.D.	APPROX. WEIGHT
F3803	2 pr - 7/30 Ind. Shielded	.164	21
F3815	1 c - 7/30 Overall Shield	.115	9
F3816	3 c - Solid 1 - Unshielded 2 - Shielded	.160	18
F3817	3 c - 7/30 1 - Unshielded 2 - Shielded	.170	18
F3818	4 c - Solid 2 - Unshielded 2 - Shielded	.165	21
F3820	4 c - 7/30 2 - Unshielded 2 - Shielded	.175	22
F3824	6 c - Solid 4 - Unshielded 2 - Shielded	.190	27
F3825	8 c - Solid 6 - Unshielded 2 - Shielded	.220	32
F3826	12 c - Solid 10 - Unshielded 2 - Shielded	.260	47
F3827	5 c - Solid 3 - Shielded 2 - Unshielded	.212	27

Description:

- Solid/Stranded copper conductors
- Color coded PVC insulation
- PVC Jacket

Application:

- Security Systems
- Intercom Systems
- Signal Systems
- Audio & Sound
- Control Circuit
- Data Transmission

Sound & Audio

20 Awg - 7/28 Stranding

PART NUMBER	CONDUCTOR	NOMINAL O.D.	APPROX. WEIGHT
F3821	3 c - 7/28 1 - Unshielded 2 - Shielded	.185	24
F3822	4 c - 7/28 2 - Unshielded 2 - Shielded	.190	29

Toll Free...MI - 877-789-1626
TN - 877-853-8106



multi conductor/multi-pair • combination cable

Sound & Audio

20 Awg - 7/28 Stranding

PART NUMBER	CONDUCTOR	NOMINAL O.D.	APPROX. WEIGHT
F3819	4 c 2 c #18 7/26, Unshielded 2 c #20 7/28, Shielded	.205	34
F3823	4 c - #18 7/26 2 - Unshielded 2 - Shielded	.215	39

Description:

- Solid/Stranded copper conductors
- Color coded PVC insulation
- PVC Jacket

Application:

- Security Systems
- Intercom Systems
- Signal Systems
- Audio & Sound
- Control Circuit
- Data Transmission

18 Awg +

PART NUMBER	CONDUCTOR	NOMINAL O.D.	APPROX. WEIGHT
F3830	3 c #22 7/30 Shielded, 3 c #18 7/26 Unshielded	.242	42
F3831	1 pr - #18 7/26 Shielded, 1 pr + 1 c # 18 7/26 Shielded, 3 c #18 7/26 Shielded, 1 c #16 19/29 Unshielded	.420	115
F3833	1 pr # 22 7/30 Shielded 10 c #22 7/30 Unshielded	.305	52
F3832	1 pr # 22 7/30 Shielded 15 c #22 7/30 Unshielded	.342	70

Description:

- Stranded bare copper conductors
- Color coded PVC insulation
- PVC Jacket

Application:

- Nurse call system
- Low voltage control circuits



shielded • multi conductor/multi-pair

Direct Burial

PART # NUMBER	AWG SIZE	STRANDING	NO. OF COND/PAIRS	SHIELDING	APPROX. WEIGHT
F246PE89	24	Solid	6 Pair	Overall	70
F90401	22	7/30	4 Cond	Overall	25
F5703	20	10/30	3 Pair	Each Pair	33
F5706	20	10/30	6 pair	Each Pair	96
F5772	18	7/26	2 Cond	Non-Shield	35
F5772S	18	7/26	2 Cond	Overall	42
F5774	18	7/26	4 Cond	Non-Shield	59
F5774S	18	7/27	4 Cond	Overall	59

Description:

- Solid/Stranded copper conductors
- Color coded insulation
- Aluminum Tape Shield
- Black Polyethylene jacket

Application:

- Audio & Data Transmissions

Sound & Audio

PART NUMBER	CONDUCTOR	NOMINAL O.D.	APPROX. WEIGHT
F3810	4 c #22 - 7/30 4 c #18 - 7/26	.214	34
F3811	5 c #22 - 7/30 2 c #18 - 7/26	.215	37
F3812	6 c #22 - 7/30 2 c #18 - 7/26	.245	40
F3813	7 c #22 - 7/30 2 c #18 - 7/26	.255	43
F3814	8 c #22 - 7/30 2 c #18 - 7/26	.265	51

Description:

- Stranded copper conductors
- Color coded PVC insulation
- PVC Jacket

Application:

- Security Systems
- Intercom Systems
- Signal Systems
- Audio & Sound
- Control Circuit
- Data Transmission

Toll Free...MI - 877-789-1626
TN - 877-853-8106



unshielded • multi conductor

Plenum Rated

22 Awg - 7/30 Stranding

PART NUMBER	CONDUCTOR	NOMINAL O.D.	APPROX. WEIGHT
F9301	2	.120	9
F9327	3	.134	12
F9302	4	.138	15
F9303	6	.165	21
F9304	8	.179	27
F9305	10	.210	33
F9322	12	.217	39

Description:

- Stranded bare copper conductors
- Color coded polymer alloy PVC insulation
- UL subject 444, Type CMP
- Available with a Striped Outer Jacket

Application:

- Security Systems
- Intercom Systems
- Signal Control Circuit
- Installed in air plenums

Plenum Rated

20 Awg - 10/30 Stranding

PART NUMBER	CONDUCTOR	NOMINAL O.D.	APPROX. WEIGHT
F9306	2	.134	12
F9307	3	.140	16
F9308	4	.156	21



shielded • multi conductor

Plenum Rated

18 Awg - 7/26 Stranding

PART NUMBER	CONDUCTOR	NOMINAL O.D.	APPROX. WEIGHT
F9309	2	.158	17
F9310	3	.168	24
F9311	4	.184	31
F9312	6	.222	44
F9313	8	.242	57
F9320	10	.292	73
F9332	12	.271	80

Description:

- Stranded bare copper conductors
- Color coded polymer alloy PVC insulation
- Polymer alloy PVC Jacket
- UL subject 444, Type CMP
- Available with a Striped Outer Jacket

Application:

- Security Systems
- Intercom Systems
- Signal Control Circuit
- Installed in air plenums

Plenum Rated

16 Awg - 19/25 Stranding

PART NUMBER	CONDUCTOR	NOMINAL O.D.	APPROX. WEIGHT
F9314	2	.182	24
F9315	4	.212	44

Plenum Rated

14 Awg - 19/27 Stranding

PART NUMBER	CONDUCTOR	NOMINAL O.D.	APPROX. WEIGHT
F9316	2	.216	36
F9329	4	.250	71

Plenum Rated

12 Awg - 19/27 Stranding

PART NUMBER	CONDUCTOR	NOMINAL O.D.	APPROX. WEIGHT
F9330	2	.258	62
F9331	3	.285	85

Toll Free...MI - 877-789-1626
TN - 877-853-8106



shielded • multi conductor / multi pair

Plenum Rated

22 Awg - 7/30 Stranding

PART NUMBER	CONDUCTOR	NOMINAL O.D.	APPROX. WEIGHT
F9301S	2	.124	11
F9327S	3	.133	14
F9302S	4	.142	17
F9303S	6	.169	23
F9304S	8	.183	29
F9305S	10	.214	35
F9317	2 Pr Ind Shld	.209	22
F9318	3 Pr Ind Shld	.221	44
F9323	2 Pr 1 Pr Shld 1 Pr Non Shield	.175	18
F9322S	12	.220	41

Description:

- Stranded bare copper conductors
- Color coded polymer alloy PVC insulation
- Polymer alloy PVC Jacket
- UL Subject 13, Type CL2P/CL3P/CMP NEC Article 725
- UL subject 444, Type CMP
- Available with a Striped Outer Jacket

Application:

- Security Systems
- Intercom Systems
- Signal Control Circuit
- Installed in air plenums

Plenum Rated

20 Awg - 10/30 Stranding

PART NUMBER	CONDUCTOR	NOMINAL O.D.	APPROX. WEIGHT
F9306S	2	.138	14
F9307S	3	.159	18
F9308S	4	.160	23
F9324S	2 Pr 1 Pr Shld 1 Pr Non Shield	.186	36



shielded • multi conductor

Plenum Rated

18 Awg - 7/26 Stranding

PART NUMBER	CONDUCTOR	NOMINAL O.D.	APPROX. WEIGHT
F9309S	2	.162	17
F9310S	3	.172	24
F9311S	4	.188	31
F9312S	6	.226	44
F9313S	8	.246	57
F9320S	10	.296	78
F9332S	12	.277	88
F9338S	2 Pr Ind Shld	.291	46

Description:

- Stranded bare copper conductors
- Color coded polymer alloy PVC insulation
- Overall foil shield with drain wire
- Polymer alloy PVC Jacket
- UL Subject 13, Type CL2P/CL3P/CMP
NEC Article 725
- UL subject 444, Type CMP
- Available with a Striped Outer Jacket

Plenum Rated

16 Awg - 19/27 Stranding

PART NUMBER	CONDUCTOR	NOMINAL O.D.	APPROX. WEIGHT
F9314S	2	.186	30
F9315S	4	.216	50

Application:

- Security Systems
- Intercom Systems
- Signal Control Circuit
- Installed in air plenums

Plenum Rated

14 Awg - 19/27 Stranding

PART NUMBER	CONDUCTOR	NOMINAL O.D.	APPROX. WEIGHT
F9316S	2	.220	45
F9329S	4	.248	55

Plenum Rated

12 Awg - 19/27 Stranding

PART NUMBER	CONDUCTOR	NOMINAL O.D.	APPROX. WEIGHT
F9330S	2	.255	66

Toll Free...MI - 877-789-1626
TN - 877-853-8106



unshielded • multi conductor • fire alarm

Non-Plenum

22 Awg - Solid

PART NUMBER	CONDUCTOR	NOMINAL O.D.	APPROX. WEIGHT
F7864	4	.158	13
F7866	6	.224	19
F7868	8	.252	25
F7870	10	.294	30

Description:

- Solid bare copper conductors
- Color coded PVC insulation
- Overall foil shield with drain wire
- PVC Jacket
- UL Subject 1424, Type FPLR, NEC Article 760

Application:

- Indoor non-conduit and non-tray
- Fire & burglar alarms
- Signaling & smoke detection
- Ask about colored jackets

Non-Plenum

18 Awg - Solid

PART NUMBER	CONDUCTOR	NOMINAL O.D.	APPROX. WEIGHT
F7801	2 Flat	.084 x .173	16
F7802	2	.150	26
F7818	4	.175	29
F7819	6	.221	43
F7820	8	.240	56
F7821	10	.291	72

* Fire Alarm Non-Plenum also available in Stranded. Consult your salesperson.



unshielded • multi conductor • fire alarm

Non-Plenum

16 Awg - Solid

PART NUMBER	CONDUCTOR	NOMINAL O.D.	APPROX. WEIGHT
F7822	2 Zip	.095 x .195	23
F7803	2	.172	23
F7850	4	.211	44

Description:

- Solid bare copper conductors
- Color coded PVC insulation
- PVC Jacket
- UL Subject 1424, Type FPLR, NEC Article 760

Application:

- Indoor non-conduit and non-tray
- Fire & burglar alarms
- Signaling & smoke detection

Non-Plenum

14 Awg - Solid

PART NUMBER	CONDUCTOR	NOMINAL O.D.	APPROX. WEIGHT
F7823	2 Zip	.108 x .221	33
F7804	2	.208	40
F7851	4	.211	44

Non-Plenum

12 Awg - Solid

PART NUMBER	CONDUCTOR	NOMINAL O.D.	APPROX. WEIGHT
F7824	2 Flat	.140 x .300	44
F7805	2	.250	53

Toll Free...MI - 877-789-1626
TN - 877-853-8106



shielded • multi conductor • fire alarm

Non-Plenum

18 Awg - Solid

PART NUMBER	CONDUCTOR	NOMINAL O.D.	APPROX. WEIGHT
F7806	2	.154	22
F7807	4	.175	29
F7852	6	.221	43
F7853	8	.240	56
F7854	10	.291	72

Description:

- Solid bare copper conductors
- Color coded PVC insulation
- Overall foil shield with drain wire
- PVC Jacket
- UL Subject 1424, Type FPLR, NEC Article 760

Application:

- Indoor non-conduit and non-tray
- Fire & burglar alarms
- Signaling & smoke detection

Non-Plenum

16 Awg - Solid

PART NUMBER	CONDUCTOR	NOMINAL O.D.	APPROX. WEIGHT
F7808	2	.176	27
F7809	4	.214	48

Non-Plenum

14 Awg - Solid

PART NUMBER	CONDUCTOR	NOMINAL O.D.	APPROX. WEIGHT
F7810	2	.212	41
F7813	4	.246	70

Non-Plenum

12 Awg - Solid

PART NUMBER	CONDUCTOR	NOMINAL O.D.	APPROX. WEIGHT
F7811	2	.254	62



unshielded • multi conductor • fire alarm

Plenum Rated

22 Awg - Solid

PART NUMBER	CONDUCTOR	NOMINAL O.D.	APPROX. WEIGHT
F9502	4	.122	13
F9503	6	.145	19
F9504	8	.162	25
F9505	10	.180	30

Description:

- Solid bare copper conductors
- Color coded polymer PVC insulation
- Polymer alloy PVC Jacket
- UL Subject 1424, Type FPLP, NEC Article 760

Application:

- Indoor non-conduit
- Indoor air plenum
- Fire & burglar alarms
- Signaling & smoke detection

Plenum Rated

18 Awg - Solid

PART NUMBER	CONDUCTOR	NOMINAL O.D.	APPROX. WEIGHT
F9506	2	.146	16
F9508	4	.171	29
F9509	6	.205	42
F9510	8	.223	55

* Fire Alarm Non-Plenum also available in Stranded. Consult your salesperson.

Toll Free...MI - 877-789-1626
TN - 877-853-8106



shielded • multi conductor • fire alarm

Plenum Rated

16 Awg - Solid

PART NUMBER	CONDUCTOR	NOMINAL O.D.	APPROX. WEIGHT
F9511	2	.168	23
F9512	4	.196	42

Description:

- Solid bare copper conductors
- Color coded polymer PVC insulation
- Polymer alloy PVC Jacket
- UL Subject 1424, Type FPLP, NEC Article 760

Plenum Rated

14 Awg - Solid

PART NUMBER	CONDUCTOR	NOMINAL O.D.	APPROX. WEIGHT
F9513	2	.198	34
F9515	4	.233	64

Application:

- Indoor non-conduit
- Indoor air plenum
- Fire & burglar alarms
- Signaling & smoke detection

Plenum Rated

12 Awg - Solid

PART NUMBER	CONDUCTOR	NOMINAL O.D.	APPROX. WEIGHT
F9514	2	.232	51
F9516	4	.276	101



shielded • multi conductor • fire alarm

Plenum Rated

18 Awg - Solid

PART NUMBER	CONDUCTOR	NOMINAL O.D.	APPROX. WEIGHT
F9506S	2	.150	20
F9508S	4	.175	32
F9509S	6	.209	46
F9510S	8	.227	59

Description:

- Solid bare copper conductors
- Color coded polymer alloy PVC insulation
- Overall foil shield with drain wire
- Polymer alloy PVC Jacket
- UL Subject 1424, Type FPLP, NEC Article 760

Application:

- **Indoor non-conduit**
- Indoor air plenum
- Fire & burglar alarms
- Signaling & smoke detection

Plenum Rated

16 Awg - Solid

PART NUMBER	CONDUCTOR	NOMINAL O.D.	APPROX. WEIGHT
F9511S	2	.172	29
F9512S	4	.200	48

Plenum Rated

14 Awg - Solid

PART NUMBER	CONDUCTOR	NOMINAL O.D.	APPROX. WEIGHT
F9513S	2	.202	43
F9515S	4	.237	73

Plenum Rated

12 Awg - Solid

PART NUMBER	CONDUCTOR	NOMINAL O.D.	APPROX. WEIGHT
F9514S	2	.236	65
F9516S	4	.300	103

Toll Free...MI - 877-789-1626
TN - 877-853-8106



unshielded • microprocessor • fire alarm

Non-Plenum Rated

18 Awg - Solid

PART NUMBER	CONDUCTOR	NOMINAL O.D.	APPROX. WEIGHT
F7802LC	2	.181	19
F7818LC	4	.200	35

Description:

- Solid bare copper conductors
- Color coded PVC insulation
- PVC Jacket
- UL Subject 1424, Type FPLR, NEC Article 760

Non-Plenum Rated

16 Awg - Solid

PART NUMBER	CONDUCTOR	NOMINAL O.D.	APPROX. WEIGHT
F7803LC	2	.220	29
F7850LC	4	.275	45

Application:

- **Microprocessor based**
- Indoor air plenum
- Fire & burglar alarms
- Signaling & smoke detection

Non-Plenum Rated

14 Awg - Solid

PART NUMBER	CONDUCTOR	NOMINAL O.D.	APPROX. WEIGHT
F7804LC	2	.228	38
F7851LC	4	.246	40

Non-Plenum Rated

12 Awg - Solid

PART NUMBER	CONDUCTOR	NOMINAL O.D.	APPROX. WEIGHT
F7805LC	2	.334	81
F7852LC	4	.240	67



shielded • microprocessor • fire alarm

Non-Plenum

18 Awg - Solid

PART NUMBER	CONDUCTOR	NOMINAL O.D.	APPROX. WEIGHT
F7806LC	2	.202	24
F7807LC	4	.263	25

Description:

- Solid bare copper conductors
- Color coded polyethylene insulation
- Overall foil shield with drain wire
- PVC Jacket
- UL Subject 1424, Type FPLR, NEC Article 760

Non-Plenum

16 Awg - Solid

PART NUMBER	CONDUCTOR	NOMINAL O.D.	APPROX. WEIGHT
F7808LC	2	.224	32
F7809LC	4	.243	50

Application:

- **Microprocessor based**
- Indoor non conduit
- Fire & burglar alarms
- Signaling & smoke detection

Non-Plenum

14 Awg - Solid

PART NUMBER	CONDUCTOR	NOMINAL O.D.	APPROX. WEIGHT
F7810LC	2	.181	21

Non-Plenum

12 Awg - Solid

PART NUMBER	CONDUCTOR	NOMINAL O.D.	APPROX. WEIGHT
F7811LC	2	.338	90

Toll Free...MI - 877-789-1626
TN - 877-853-8106



unshielded • microprocessor • fire alarm

Plenum Rated

18 Awg - Solid

PART NUMBER	CONDUCTOR	NOMINAL O.D.	APPROX. WEIGHT
F9506LC	2	.169	20
F9508LC	4	.250	29

Description:

- Solid bare copper conductors
- Color coded PVC insulation
- PVC Jacket
- UL Subject 1424, Type FPLP, NEC Article 760

Plenum Rated

16 Awg - Solid

PART NUMBER	CONDUCTOR	NOMINAL O.D.	APPROX. WEIGHT
F9511LC	2	.191	27
F9512LC	4	.200	43

Application:

- **Microprocessor based**
- Indoor air plenum
- Fire & burglar alarms
- Signaling & smoke detection

Plenum Rated

14 Awg - Solid

PART NUMBER	CONDUCTOR	NOMINAL O.D.	APPROX. WEIGHT
F9513LC	2	.217	38
F9515LC	4	.236	67



shielded • microprocessor • fire alarm

Plenum Rated

18 Awg - Solid

PART NUMBER	CONDUCTOR	NOMINAL O.D.	APPROX. WEIGHT
F9506SLC	2	.173	22
F9508SLC	4	.208	31

Description:

- Solid bare copper conductors
- Color coded polyethylene insulation
- Overall foil shield with drain wire
- PVC Jacket
- UL Subject 1424, Type FPLP, NEC Article 760

Plenum Rated

16 Awg - Solid

PART NUMBER	CONDUCTOR	NOMINAL O.D.	APPROX. WEIGHT
F9511SLC	2	.195	31
F9512SLC	4	.210	50

Application:

- **Microprocessor based**
- Indoor non-conduit
- Fire & burglar alarms
- Signaling & smoke detection

stranded • fire alarm

PART # NUMBER	AWG SIZE	STRANDING	NO. OF COND	SHIELDING	NOMINAL O.D.	APPROX. WEIGHT
F9514 - STR	12	7 X 20	2 Cond	Non-Shield	0.254	53
F9514S - STR	12	7 X 20	2 Cond	Shielded	0.256	54
F9513 - STR	14	7 X .0242	2 Cond	Non-Shield	0.210	35
F9513S - STR	14	7 X .0242	2 Cond	Shielded	0.214	37
F9511 - STR	16	7 X 24	2 Cond	Non-Shield	0.174	22
F9511S - STR	16	7 X 24	2 Cond	Shielded	0.180	28
F9506 - STR	18	7 X 26	2 Cond	Non-Shield	0.154	30
F9506S - STR	18	7 X 26	2 Cond	Shielded	0.156	32

Description:

- Stranded copper conductors
- Color coded polyethylen insulation
- Overall foil shield with drain wire
- Plenum Jacket
- UL Subject 1424, Type FPLP, NEC Article 760

Application:

- **Microprocessor based**
- Indoor non-conduit
- Fire & burglar alarms
- Signaling & smoke detection

Toll Free...MI - 877-789-1626
TN - 877-853-8106



coaxial cable

RG59/U - PVC

PART NUMBER	AWG & STRANDING	INSULATION MATERIAL	SHIELDS INNER/OUTER	NOM. O.D.	NOM. IMP.	NOM.% VEL. OF PROP	UL STYLE/ MILITARY
F2807	22 Solid	PE	BCB	.242	73	66	Jan C17A
F2808 Dual RG59/U	23 Solid CCS	PE	BCB	.242 x .505	75	66	UL20020
F2820	22 (7 x 30) BC	FPE	BCB	.242	75	78	1354 CL2
F2821	22 SOLID CCS	FPE	AMF/AB	.242	75	78	Commercial
F2822	20 SOLID CCS	FPE	AMF/AB	.242	75	--	Commercial
F2825 Direct Burial	20 Solid BC	FPE	BCB	.242	75	78	NONUL
F2826 Siamese	1 22 Solid 1 pr 18 str. (16 x 30)	FPE	BCB	.242 x .460	75	78	CL2/CL3/CM
F2827 Siamese	1 20 Solid 1 pr 18 str. (16 x 30)	FPE	BCB	.242 x .460	75	78	CL2/CL3/CM
F2828	20 Solid BC	FPE	BCB	.242	75	--	CL2/CL3/CM
F2829 Siamese	1 22 Str. 1 pr 22 Str.	FPE	BCB AMF	.242 x .445	75	78	CL2/CL3/CM



coaxial cable

RG6/U - PVC

PART NUMBER	AWG & STRANDING	INSULATION MATERIAL	SHIELDS INNER/OUTER	NOM. O.D.	NOM. IMP.	NOM.% VEL. OF PROP	UL STYLE/ MILITARY
F2800 Schlage	18 Solid BC	FPE	Bonded Bifoil 100%/AB/65%	.270	75	78	CL2/CL3/CM
F2801	18 Solid BC	FPE	AMF/AB	.270	75	78	C12/CATV/CM
F2801 CATV	18 Solid CCS	FPE	AM/60%AB	.272	75	82	CL2/CL3/CM
F2801 CU	18 Solid	FPE	90%BCB	.278	75	78	CL2/CL3/CM
F2801CUFTCB	18 Solid BC	FPE	AMF/TCB	.272	75	82	CL2/CL3/CM
F2801DB	18 Solid BC	FPE	95%BCB	.278	75	78	Burial
F2801 Dual	18 Solid	FPE	AMF/AB	.272/2	75	72	CL2/CL3/CM
F2801Q	18 Solid CCS	FPE	2-AMF/2-AB	.307	75	78	CL2/CL3/CM

RGB - PVC

PART NUMBER	AWG	JACKET TYPE & THICKNESS	NOMINAL O.D.	APPROX WEIGHT
RGB3C-PVC	23 AWG	PVC .050"	.460	102
RGB5C-PVC	25 AWG	TPE/PVC .045	.535	142
RGB5C-TPVC (StaRGB)	26 AWG	TPE/PVC .035	.347	57
RGB5CSOL-PVC	25 AWG	TPE/PVC .040	.405	80

Conductors

BCBare Copper
 TCTinned Copper
 SCSilver Coated Copper
 SCWCopperweld-Silver Coated
 CCSCopper Covered Steel
 *FEPTeflon

Insulations

FPE Foam Polyethylene
 PE Solid Polyethylene
 SSP Semi Solid Polyethylene
 *TFE Teflon
 HDPE High Density Polyethylene
 *FEP Teflon
 FFEP Foamed Teflon
 Kyn Kynar

Shields

AMF Aluminum Mylar Foil
 AB Aluminum Braid
 BCB Bare Copper Braid
 TCB Tinned Copper Braid
 SCB Silver Coated Copper Braid

*Dupont Registered Trademark

Toll Free...MI - 877-789-1626
TN - 877-853-8106



coaxial cable

RG59/U - PLENUM

PART NUMBER	AWG & STRANDING	INSULATION MATERIAL	SHIELDS INNER/OUTER	NOM. O.D.	NOM. IMP.	NOM.% VEL. OF PROP	UL STYLE/ MILITARY
F9440	20 Solid BC	*FFEP	BCB/---	.200	75	84	CL2P/CL3P/CMP
F9430 Dual RG59/U	23 Solid CCS	*FEP	BCB/---	.206 x .450	75	69	CL2P/CL3P/CMP
F9447 Siamese	20 Solid BC 1 pr 18 (7 x 26) TC	*FFEP KYN	BCB	.212 x .380	75	82	CL2P/CL3P/CMP

RG6/U - PLENUM

PART NUMBER	AWG & STRANDING	INSULATION MATERIAL	SHIELDS INNER/OUTER	NOM. O.D.	NOM. IMP.	NOM.% VEL. OF PROP	UL STYLE/ MILITARY
F9470	18 Solid BC	FFEP	BCB	.170	75	82	CL2P/CL3P/CMP
F9470FAB	18 Solid	FFEP	AMF/AB	.243	75	82	CL2P/CL3P/CMP
F9471 (Schlage)	18 Solid BC	FFEP	Bonded Bifoil 100%/AB60% Bifoil 100%/AB40%	.280	75	84	CL2P/CL3P/CMP

RGB - PLENUM

PART NUMBER	AWG	JACKET TYPE & THICKNESS	NOMINAL O.D.	APPROX. WEIGHT
RGB5C-PLENUM	26 AWG	Plenum .015"	.305	48

Conductors

BCBare Copper
 TCTinned Copper
 SCSilver Coated Copper
 SCWCopperweld-Silver Coated
 CCSCopper Covered Steel
 •FEPTeflon

Insulations

FPE Foam Polyethylene
 PE Solid Polyethylene
 SSP Semi Solid Polyethylene
 *TFE Teflon
 HDPE High Density Polyethylene
 *FEP Teflon
 FFEP Foamed Teflon
 Kyn Kynar

Shields

AMF Aluminum Mylar Foil
 AB Aluminum Braid
 BCB Bare Copper Braid
 TCB Tinned Copper Braid
 SCB Silver Coated Copper Braid

*Dupont Registered Trademark



coax accessories

RG59/RG62 BNC Connectors

PART NUMBER	GENDER	CABLE TYPE	TYPE	O.D. RANGE	COND. AWG.	TOOL DATA
F27-9000	Male	FG59, 62	2pc Crimp	.230 - .255	20-24	24-8859P
F27-9020	Male	FG59, 62	Solder	.230 - .248	18-24	
F27-9023	Male	FG59, 62	Compression	.230 - .253	20-24	
F27-9050	Male	FG59, 62	Twist	.230 - .260	20-24	
F27-9100	Male	FG59, 62	3pc Crimp	.230 - .275	20-24	24-8789P
F27-9056	Male 90°	FG59, 62	Twist	.230 - .260	18-24	
F27-9003	Female	FG59, 62	2pc Crimp	.230 - .255	20-24	24-8859P
F27-9053	Female	FG59, 62	Twist	.230 - .260	18-24	
F27-9009	Male	FG59, 62 Teflon	2pc Crimp	.185 - .215	20-24	24-8855P
F27-9210	Male	FG59, 62 Teflon	2pc Crimp	.230 - .255	18-24	248858P
F27-9054	Male	FG59, 62 Teflon	Twist	.200 - .232	20-24	
F27-9103	Male	FG59, 62 Teflon	3pc Crimp	.180 - .205	20-24	24-8858P
F27-9057	Male 90°	FG59, 62 Teflon	Twist	.200 - .232	18-24	
F27-9033	Female	FG59, 62 Teflon	Twist	.200 - .232	18-24	
F27-9006	Male	FG59, 62 Teflon	2pc Crimp	.300 - .315	20-24	24-8856P

RG59 F Connectors

PART NUMBER	DESCRIPTION	NOTES
F25-7010	F Male 1/4" Ring	F-59
F25-7020	F Male 1/2" Ring	F-59
F25-7050	F Male Attached 1/8" Ring	F-59A
F25-7030	F Male Attached 1/2" Ring	F-56ALM
F25-7031	F Male Attached 1/2" Ring	F-59ALX
F25-7146	F Right Angle	F-569RA
F25-7120	Twist-On	F-59TW
F25-7121	Twist-On Deluxe	F-59TW
F25-7121T	F Male Twist-On	For Teflon

Toll Free...MI - 877-789-1626
TN - 877-853-8106



coax accessories

RG6 F Connectors

PART NUMBER	DESCRIPTION	NOTES
F25-7150	F Male 1/4" Ring	F-56
F25-7160	F Male Attached 1/4" Ring	F-56A
F25-7032	F Male Attached 1/2" Ring	F-56ALM
F25-7033	F Male Attached 1/4" Ring	F-56ALX Tri-Shield
F25-7034	F Male Attached 1/2" Ring	F-56ALS Quad-Shield
F25-7180	F Male Twist- On	F-56TW
F25-7046	F Male	For Teflon

RG6 BNC Connectors

PART NUMBER	GENDER	CABLE TYPE	TYPE	O.D. RANGE	COND. AWG.	TOOL DATA
F27-9002	Male	RG6	2pc Crimp	.250 - .285	18-20	24-8859P/ 24-8856P
F27-9052	Male	RG6	Twist	.250 - .285	18-20	
F27-9102	Male	RG6	3pc Crimp	.250 - .280	18-22	24-8856P
F27-9013	Female	RG6	2pc Crimp	.250 - .280	18-20	24-8786P/ 24-8789P
F27-9032	Female	RG6	Twist	.250 - .280	18-22	
F27-9209	Male	RG6 Teflon	2pc Crimp	.185 - .215	18-20	24-8858P



coax accessories

RG6 F Connectors

PART NUMBER	FROM	TO	NOTES
F25-7420	BNC Male	UHF Female	UG-255
F25-7500	BNC Male	F Female	
F25-7510	BNC Male	RCA Female	
F25-8130	BNC Male	BNC Male	UG-491/U
F25-8140	BNC Male	2x BNC Female	UG-274/U
F25-8142	BNC Male	2x BNC Male	
F25-8150	BNC Male 90°	BNC Female	UG-306/U
F25-7430	BNC Female	BNC Female	UG-914/U
F25-8100	BNC Female	BNC Male	
F25-8110	BNC Female	RCA Male	
F25-8120	BNC Female	UHF Male	
F25-8141	BNC Female	2x BNC Female	

BNC Terminators

PART NUMBER	VALUE
F27-9007	75 Ohms .5W @ 1%
F27-9008	50 Ohms .5W @ 1%
F27-9093	93 Ohms .5W @ 1%

BNC Chassis Mounts

PART NUMBER	DESCRIPTION	NOTES	MTG. HOLE FIG.
F27-8460	Chassis Mount Femal	UG-1094/U 3/8" Dia.	3/8"
F27-8461	Insulated Chassis Mount	3/8" Dia.	3/8"
F27-8470	Dual Female Chassis Mount	UG-494/U 1/2" Dia.	1/2"
F27-8471	Dual Female Chassis Mount	5/8" Dia. Isolated	5/8"
F27-8475	Twist-On Female Chassis Mount	Fits RG-58	3/4"
F27-8476	Twist-On Female Chassis Mount	Fits RG-59, 62	3/4"

Toll Free...MI - 877-789-1626
TN - 877-853-8106



category cabling

CAT3 PVC 24 Awg - Solid

PART NUMBER	PAIR COUNT	SHIELDING
F6519	2 Pr.	Unshielded
F20610	4 Pr.	Unshielded
F6521	6 Pr.	Unshielded
F20614	25 Pr.	Unshielded
F6526	50 Pr.	Unshielded
F6528	100 Pr.	Unshielded

Description:

- UL Listed Type CMR
- CSA PCC FT4

CAT5E PVC 24 Awg - Solid

PART NUMBER	PAIR COUNT	SHIELDING
F20680	2 Pr.	Unshielded
F20681	3 Pr.	Unshielded
F20682	4 Pr.	Unshielded
F20682S	4 Pr.	Shielded
F20682SDB Direct Burial	4 Pr.	Shielded
F20682DB Direct Burial	4 Pr.	Unshielded
F20693	25 Pr.	Unshielded
F2450CAT5	50 Pr.	Unshielded
F20695	100 Pr.	Unshielded

CAT 3, CAT5E, CAT6 and CAT7 cable is available in a variety of colors.

CAT 3, CAT5E, CAT6 and CAT7 cable is available on a reel, pull out box or reel in box.

CAT6 PVC 23 Awg - Solid

PART NUMBER	PAIR COUNT	SHIELDING
F20688	4 Pr.	Unshielded
F2325CAT6	25 Pr.	Unshielded
F2350CAT6	50 Pr.	Unshielded
F23100CAT6	100 Pr.	Unshielded

CAT6A PVC 23 Awg - Solid

PART NUMBER	PAIR COUNT	SHIELDING
F20688A	4 Pr.	Unshielded
F20688AS	4 Pr.	Shielded

CAT7 PVC 23 Awg - Solid

PART NUMBER	PAIR COUNT	SHIELDING
F20690	4 Pr.	Unshielded



category cabling

CAT3 Plenum 22 Awg - Solid

PART NUMBER	PAIR COUNT	SHIELDING
F9625	25 Pr.	Unshielded

Description:

- UL Listed Type CMR/CMP
- CSA PCC FT4

CAT3 Plenum 24 Awg - Solid

PART NUMBER	PAIR COUNT	SHIELDING
F20611	4 Pr.	Unshielded
F9655	25 Pr.	Unshielded
F9656	50 Pr.	Unshielded
F9657	100 Pr.	Unshielded

Application:

- Voice & Data

CAT5E Plenum 24 Awg - Solid

PART NUMBER	PAIR COUNT	SHIELDING
F20683	4 Pr.	Unshielded
F20683S	4 Pr.	Shielded
F20694	25 Pr.	Unshielded
F20696	50 Pr.	Unshielded
F20698	100 Pr.	Unshielded

CAT 3, CAT5E, CAT6 and CAT7 cable is available in a variety of colors.

CAT6 Plenum 23 Awg - Solid

PART NUMBER	PAIR COUNT	SHIELDING
F20689	4 Pr.	Unshielded
F20689S	4 Pr.	Shielded
F2325CAT6PL	25 Pr.	Unshielded
F2350CAT6PL	50 Pr.	Unshielded
F23100CAT6PL	100 Pr.	Unshielded

CAT 3, CAT5E, CAT6 and CAT7 cable is available on a reel, pull out box or reel in box.

CAT6A Plenum 23 Awg - Solid

PART NUMBER	PAIR COUNT	SHIELDING
F20689A	4 Pr.	Unshielded
F20689AS	4 Pr.	Shielded

CAT7 Plenum 23 Awg - Solid

PART NUMBER	PAIR COUNT	SHIELDING
F20691	4 Pr.	Unshielded
F20691S	4 Pr.	Shielded

Toll Free...MI - 877-789-1626
TN - 877-853-8106

outside phone wire

PE Style Phone Cable

There are many different constructions for outside phone cable. This following is used to explain the most popular styles as well as help identify the correct outside plant cable for your application.

1. REA Specification PE -22 – PE 22 is an aerial and duct outside plant copper phone cable. PE-22 uses a solid polyolefin colored insulated, single jacketed aircore design that is manufactured in 26, 24, 22 and 19 AWG. It has an 8-mil* aluminum tape shield applied longitudinally over the core wrap. The outer jacket is a sunlight resistant black polyethylene that is very rugged. PE-22 is manufactured from 6 pairs to 3000 pairs. PE-22 does not contain a supporting messenger in the construction therefore it would require one to be used in an aerial application.

2. REA Specification PE-38 – PE 38 is also an aerial outside plant phone. The key difference between PE-38 and PE-22 is that the PE-38 has a built in support member specifically for aerial applications. The figure 8 configuration is a parallel construction with the actual pairs of cable zipped to 90° inch, seven strand extra high strength galvanized steel messenger. The supporting messenger is an integral part of the cables sheath yet readily available for gripping, pulling and tensioning.

3. REA Specification PE-89 – PE-89 is designed for duct or direct burial applications. This cable utilizes a dual insulation with a layer of foamed, natural polyolefin cover by an outer layer of solid, color coded polyolefin. The standard construction has an 8 mil aluminum shield with the low density polyethylene jacket. Offered in 19, 22, 24 and 26 AWG from 6 pair to 3600 pair.

4. REA Specification PE-39 – PE 39 is also a direct burial outside plant phone cable. The key difference between PE-89 and PE-39 is PE-39 only is insulated with a solid layer of polyolefin. Typically, PE-39 is slightly more expensive than PE-89 but in the vast majority of applications they are interchangeable.

5. REA Specification PE-86 – PE-86 is a double jacketed direct burial outside plant phone cable that is available in smaller pair counts such as 2 and 3 pair which are not available in PE-39 or PE-89.

PE Style Phone Cable

PART NUMBER	AWG	PAIR COUNT	JACKET	NOMINAL O.D.	WEIGHT LBS.
F246PE22	24 SOLID	6	PE	0.34	51
F246PE38	24 SOLID	6	PE	0.37	220
F246PE89	24 SOLID	6	PE	0.40	70
F246PE39	24 SOLID	6	PE	0.43	80
F243PE86	24 SOLID	3	DBL PE	0.41	90
F222PE86	22 SOLID	2	DBL PE	0,32	55



fiber technical information

Fiber Elements

Fiber Optics provide the most advanced communication media available today and an increasing amount of fiber will be installed in the future as we find more and more uses for this technology. Fiber Optics can support voice, data, video, and other types of transmission.

Core

This is the very center of the cable and is the light guiding area used for light transmission. The size of the core will determine the amount of light to be transmitted into the fiber. The larger the core, the more amount of light will be transmitted.

Cladding

The cladding surrounds the core glass and serves to refract the light back into the core. The cladding has a different index of refraction than the core so that the lightwaves are redirected back into the core allowing continued light transmission through the fiber.

Coating

Several coatings of acrylate are usually applied to the fiber to provide tensile strength and protection to the glass fiber core.

Jacket

The cable jacket works along with the aramid fibers to provide strength, integrity, and overall protection of the fiber member. There are a variety of jacketing materials that are used in fiber cable construction. Standard compounds and special variations of these compounds can be used in making the jacket. The selection of cable with the proper jacket for the environment it will be installed in is an important consideration. Environmental parameters that should be considered include temperature variations, chemical reactance, sunlight resistance, mechanical and abrasion resistance.

Fiber Optic Cable Types

Fiber Optic Size

This is measured by comparing the core size to the cladding size. This is expressed by the core diameter and then the cladding with coating diameter.

Fiber Optic Cable Modes

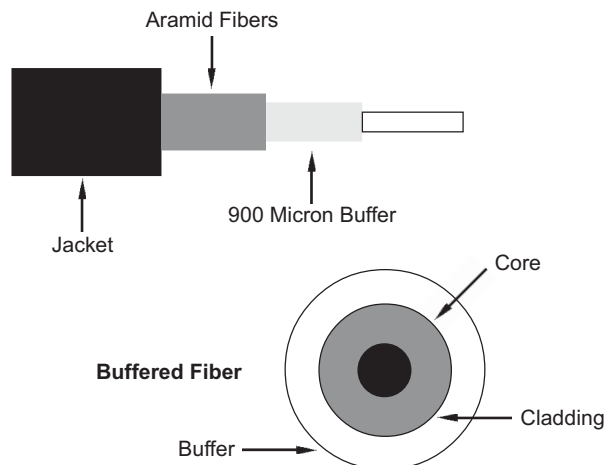
There are basically two types or modes of fiber optic cable, single mode and multi-mode.

Single Mode

The core on single mode is about 8-10 micron. This small core size allows only one-mode of light to travel within the core at a time. The higher bandwidth, the more information carrying capacity the cable has. This type of cable is good for long distances. Often used by telephone companies for long transmissions.

Multi-Mode

The core on multi-mode is about 50-100 micron. A larger core allows many light pulses or modes to travel through the core simultaneously. Mode overlap can occur over extremely long distances and may cause bit errors. Multi-mode is best used for lengths up to 2 kilometers.



Fiber Optic Cable Benefits

High Bandwidth

The higher the bandwidth, the greater information carrying capacity. A higher bandwidth allows for higher data rates, more users and longer distances.

Easy Upgrades

Fiber optics allow for easy upgrades in the future. Because a variety of transmissions can use fiber optics, all that is necessary is to change the electronics. The cable can stay in place. No need to pull new cable in the future.

Low Attenuation

This is a reduction of signal strength or loss of light power over the length of the fiber. Fiber optic cables usually have low attenuation characteristics which allow signals to travel over longer distances without reamplification. However, attenuation can be affected by extrinsic (environmental and physical bends), intrinsic (absorption and scattering) and wavelength. The higher the wavelength, the lower the attenuation.

EMI/RFI Immunity

Since fiber optic transmits light instead of electrical current, immunity to electromagnetic and radio frequency interference provides better signal quality, ensuring low bit error rates and/or low noise on the system.

Security

Again, since there is no electrical signal, fiber optic transmission is almost impossible to tap into without being detected.

Lightweight

Fiber optic cable is smaller and lighter than copper cable allowing for easier installation, especially when conduit and/or raceway space is at a premium.

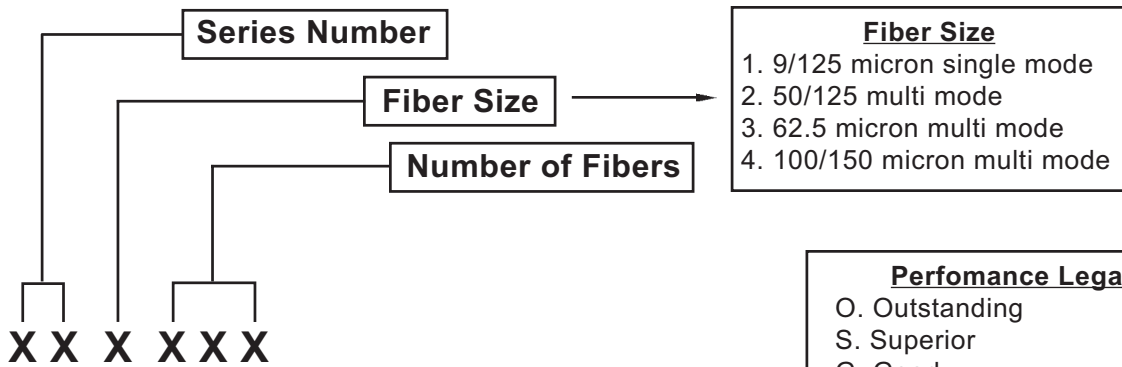
Toll Free...MI - 877-789-1626
TN - 877-853-8106

fiber optical cable

Non Plenum Tight Buffer

SERIES NUMBER	TYPICAL INSTALLATION	TYPICAL APPLICATION	CENTRAL STRENGTH ELEMENT	OUTER JACKET	TEMPERATURE RANGE °C	FLEXIBILITY	CRUSH	FIRE	WATER
31 Simplex	Short Haul Tray Conduit, Duct	A,B	*Kevlar	PVC	-20 + 80	G	G	S	G
32 Duplex	Short Haul Air Handling Plenums	A,D,F	*Kevlar	**Kynar	-20 + 80	G	G	O	F
33 Multifiber	Short Haul Tray Conduit, Duct	A,B,C G,H	*Kevlar	PVC	-20 + 80	S	S	S	G

How to Construct fiber optic cable part numbers:



Typical Application Legend
A. Point to Point Data
B. Intra-Building (In Plant) Networking Data Distribution
C. Inter-Building (Outside Plant) Networking Data Distribution
D. Inter-Building (Outside Plant) Extending Data Trunk Line
E. Inter-Building (Outside Plant) Telecommunication Trunk Line
F. Air Handling Plenum NEC OFNP 770-6c
G. Vertical Riser NEC OFNR 770-6b
H. Premise Data Distribution NEC OFN 770-6a

* Kevlar - Registered to Dupont
 ** Kynar - Registered to Penwalt



fiber optical cable

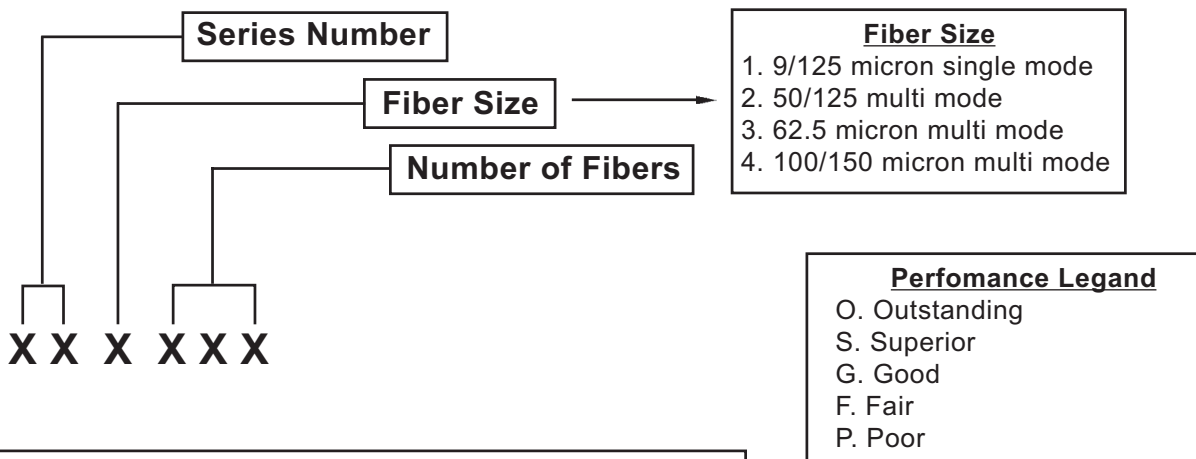
Plenum Tight Buffer

SERIES NUMBER	TYPICAL INSTALLATION	TYPICAL APPLICATION	CENTRAL STRENGTH ELEMENT	OUTER JACKET	TEMPERATURE RANGE °C	FLEXIBILITY	CRUSH	FIRE	WATER
34 Duplex	Short Haul Air Handling Plenums	A,B,F	*Kevlar	**Kynar	-20 + 80	G	G	O	F
35 Multifiber	Short Haul Air Handling Plenums	A,B,F	*Kevlar	**Kynar	-20 + 80	G	G	O	F

Outdoor Loose Tube Buffer

SERIES NUMBER	TYPICAL INSTALLATION	TYPICAL APPLICATION	CENTRAL STRENGTH ELEMENT	OUTER JACKET	TEMPERATURE RANGE °C	FLEXIBILITY	CRUSH	FIRE	WATER
36	Short Haul Ruggedized / Direct Burial Conduit, Duct	D,E	Fiber Glass	PE	-40 + 80	P	S	P	S

How to Construct fiber optic cable part numbers:



<u>Typical Application Legend</u>
A. Point to Point Data
B. Intra-Building (In Plant) Networking Data Distribution
C. Inter-Building (Outside Plant) Networking Data Distribution
D. Inter-Building (Outside Plant) Extending Data Trunk Line
E. Inter-Building (Outside Plant) Telecommunication Trunk Line
F. Air Handling Plenum NEC OFNP 770-6c
G. Vertical Riser NEC OFNR 770-6b
H. Premise Data Distribution NEC OFN 770-6a

* Kevlar - Registered to Dupont
 ** Kynar - Registered to Penwalt

Toll Free...MI - 877-789-1626
TN - 877-853-8106



fiber assembly types

Fiber Optic Terminations

SINGLEMODE	MULTIMODE
SC	SC
ST	ST
FC	FC
LC	MTRJ
MTRJ	LC
MTP (MPO)	MTP (MPO)
SC / APC	SMA 905
FC / APC	SMA 906
LC / APC	OPTIJACK / PLUG
MTP (MPO)/APC	FDDI
OPTIJACK / PLUG	MU

Fiber Optic Terminations

MULTIMODE DUPLEX	SINGLEMODE DUPLEX
MULTIMODE SIMPLEX	SINGLEMODE SIMPLEX
MULTIMODE MULTIFIBER BREAK OUT	SINGLEMODE MULTIFIBER BREAK OUT
MULTIMODE MULTIFIBER DISTRIBUTION	SINGLEMODE MULTIFIBER DISTRIBUTION
MULTIMODE PIGTAILS	SINGLEMODE PIGTAILS
MULTIMODE MINICORD	SINGLEMODE MINICORD

NO MINIMUM ORDER • NO DROP SHIP PENALTY

Fiber Optic Terminations

ALL ASSEMBLY TYPES: PVC OR PLENUM?
SINGLEMODE: POLISH TYPE? PC, UPC (-55 return loss) OR APC (-65 return loss)
MULTIFIBER: DISTRIBUTION OR BREAKOUT?
IF DISTRIBUTION, IS A FAN KIT NEEDED?
LENGTH OR BREAKOUT?
PULLING EYE?
WHICH END FOR PULLING EYE (INNER OR OUTER)
SPOOLING: SPOOLED OR HAND COILED?
IF DIFFERENT CONNECTORS, WHICH END ON OUTSIDE?

METRIC CONVERSION

METERS TO FEET	MULTIPLY BY 3.281
FEET TO METERS	DIVIDE BY 3.281



bare copper

Solid Copper

PART NUMBER	SIZE (AWG or MCM)	STRANDS NOM. O.D. (INCHES)	APPROX OUTSIDE DIA. (INCHES)	APPROX WEIGHT 1000 FT. (LBS)
F10002	22	Solid	.025	2
F10004	20	Solid	.032	3
F10006	18	Solid	.040	5
F10008	16	Solid	.051	8
F10010	14	Solid	.064	13
F10012	12	Solid	.081	19
F10014	10	Solid	.102	31
F10016	8	Solid	.129	49
F10018	6	Solid	.162	79
F10020	4	Solid	.202	126
F10022	2	Solid	.258	201

Application:

For equipment and circuit grounding in accordance with Article 250 of the National Electrical Code (and subject to local requirements).

Construction:

Solid (Sizes 22 - 4AWG)
Soft, annealed bare copper per ASTM B-3
Stranding (Sizes 22 - 1-AWG)
Soft, annealed bare copper per ASTM B-3
Concentric stranding (class B)
ASTM B-8
Stranding (Sizes 8AWG - 100MCM)
Soft, annealed bare copper per ASTM B-3
Concentric, compressed stranding (class B) ASTM B-8

Stranding Copper (Class B)

PART NUMBER	SIZE (AWG or MCM)	STRANDS NOM. O.D. (INCHES)	APPROX OUTSIDE DIA. (INCHES)	APPROX WEIGHT 1000 FT. (LBS)
F10024	22	7/.0100	.030	2
F10026	20	7/.0121	.038	3
F10028	18	7/.0152	.046	5
F10030	16	7/.0192	.058	8
F10032	14	7/.0242	.073	14
F10034	12	7/.0305	.092	20
F10036	10	7/.0385	.116	32
F10038	8	7/.0486	.144	51
F10040	6	7/.0612	.181	81
F10042	6	7/.0612	.181	81
F10044	3	7/.0867	.254	167
F10046	2	7/.0974	.285	205
F10048	1	19/.0664	.324	259
F10050	1/0	19/.0745	.364	326
F10052	2/0	19/.0837	.408	411
F10054	3/0	19/.0940	.458	518
F10056	4/0	19/.0940	.458	518
F10058	250	37/.0822	.560	772
F10060	300	37/.0900	.613	925
F10062	350	37/.0973	.663	1080
F10064	400	37/.1040	.708	1236
F10066	500	37/.1162	.791	1542
F10068	600	61/.0992	.870	1850
F10070	750	61/.1109	.972	2316

Toll Free...MI - 877-789-1626

TN - 877-853-8106



building wire 600 volt

THHN - THWN 90° C Dry 75° Wet

PART NUMBER	Size AWG or MCM	No. Of Strs.	Nom. Insul. (In.)	Nylon Sheath (In.)	Approx. O.D. (In.)	Approx. Ship Wt. (lb/Mft.)	Ampacity*
F828S	16	Solid	.015	.004	.10	12	10
F825	14	Solid	.015	.004	.11	16	15
F826	12	Solid	.120	.004	.12	24	20
F827	10**	Solid	.015	.004	.15	37	30
F828	16	26	.015	.004	.10	12	10
F829	14	19	.015	.004	.11	16	15
F830	12	19	.020	.004	.13	24	20
F831	10	19	.030	.004	.17	39	30
F832	8	19	.030	.005	.22	64	50
F833	6	19	.040	.005	.26	96	70
F834	4	19	.040	.006	.33	154	90
F835	3	19	.040	.006	.33	191	105
F836	2	19	.050	.006	.39	236	120
F837	1	19	.050	.007	.45	302	140
F838	1/0	19	.050	.007	.49	375	155
F839	2/0	37	.050	.007	.54	465	185
F840	3/0	37	.050	.007	.59	578	210
F841	4/0	37	.050	.007	.65	719	236
F842	250	37	.060	.008	.72	858	270
F843	300	61	.060	.008	.77	1021	300
F844	350	61	.060	.008	.83	1182	325
F845	400	61	.060	.008	.87	1350	360
F846	500	61	.060	.008	.95	1662	405

MTW 90° C Dry 60° Wet

PART NUMBER	Size AWG or MCM	No. Of Strs.	Nom. Insul. (Mils.)	Approx. O.D. (In.)	Approx. Ship Wt. (lb/Mft.)	Ampacity*
F1701	18	16	30	.110	10	7
F1702	16	19	30	.120	14	10
F1703	16	26	30	.120	14	10
F1704	14	19	30	.140	19	15
F1705	14	41	30	.140	19	15
F1706	12	19	30	.160	31	20
F1707	12	65	30	.160	31	20
F1708	10	19	30	.180	42	30
F1709	10	105	30	.190	42	30
F1710	8	19	45	.240	70	40
F1711	6	19	60	.310	111	55
F1712	4	19	60	.360	169	70
F1713	3	19	60	.390	206	80
F1714	2	19	60	.420	256	95
F1715	1	19	80	.500	328	110
F1716	1/0	19	80	.540	402	125
F1717	2/0	19	80	.590	494	145
F1718	3/0	19	80	.640	610	165
F1719	4/0	19	80	.700	760	195

XHHW 90° C Dry 75° Wet

PART NUMBER	Size AWG or MCM	No. Of Strs.	Nom. Insul. (Mils.)	Approx. O.D. (In.)	Approx. Ship Wt. (lb/Mft.)	Wet 75C	Dry 75C
F868	14	Solid	30	.13	20	15	15
F869	12	Solid	30	.15	30	20	20
F870	10	Solid	30	.17	46	30	30
F871	14	7	30	.14	22	15	15
F872	12	7	30	.16	31	20	20
F873	10	7	30	.18	48	30	30
F874	8	7	45	.24	79	45	50
F875	6	7	45	.28	119	65	70
F876	4	7	45	.33	182	85	90
F877	2	7	45	.39	278	115	120
F878	1	19	55	.45	355	130	140
F879	1/0	19	55	.49	455	150	155
F880	2/0	19	55	.54	552	175	185
F881	3/0	19	55	.59	685	200	210
F882	4/0	19	55	.65	854	230	235
F883	250	37	65	.71	1018	255	270
F884	300	37	65	.77	1210	285	300
F885	350	37	65	.82	1404	310	325
F886	400	37	65	.87	1624	335	360
F887	500	37	65	.95	1987	380	405
F888	600	61	80	1.06	2383	420	455
F889	750	61	80	1.17	2980	475	500
F890	1000	61	80	1.34	3960	545	585

XLP/USE 90° C Dry 60° Wet

PART NUMBER	Size AWG or MCM	No. Of Strs.	Nom. Insul. (64ths)	Approx. O.D. (In.)	Approx. Ship Wt. (lb/Mft.)	Ampacity*
F847	12	Solid	3	.18	36	20
F848	10	Solid	3	.20	52	30
F849	12	7	3	.19	37	20
F850	10	7	3	.22	55	30
F851	8	7	4	.28	89	45
F852	6	7	5	.35	137	65
F853	4	7	5	.40	204	85
F854	2	7	5	.46	307	115
F855	1	19	6	.53	405	130
F856	1/0	19	6	.57	481	150
F857	2/0	19	6	.62	577	175
F858	3/0	19	6	.67	718	200
F859	4/0	19	6	.73	896	230
F860	250	37	7	.80	1068	255
F861	300	37	7	.86	1275	285
F862	350	37	7	.91	1460	310
F863	400	37	7	.96	1656	335
F864	500	37	7	1.04	2050	380
F865	600	61	8	1.15	2420	420
F866	750	61	8	1.26	3060	475
F867	1000	61	8	1.43	4050	545

* Based on 30° ambient

** Not listed as THHN - only 105°C AWM-90°C MTW



hook - up - wire

Mil-W-76 B Type MW - Uncovered PVC 1000V -40° C to +80° C

PART NUMBER	CONDUCTOR SIZE	STRANDING	NOMINAL INSULATION THICKNESS	NOMINAL O.D.	APPROX WEIGHT (lb/Mft.)
F201	24	7/32	.016"	.059"	3
F202	22	7/30	.016"	.064"	4
F203	20	10/30	.016"	.073"	5
F204	18	16/30	.016"	.084"	8
F205	16	26/30	.016"	.059"	11
F206	14	41/30	.016"	.125"	16
F207	12	65/30	.016"	.125"	25

Description:

Stranded tinned copper, color coded, polyvinylchloride insulation. Resistant to acids, alkalis, oil flame, moisture, solvents and fungus.

SPECIFY COLOR

UL Style 1007 80° C CSA Style TR-64 90° C

PART NUMBER	CONDUCTOR SIZE	STRANDING	NOMINAL INSULATION THICKNESS	NOMINAL O.D.	APPROX WEIGHT (lb/Mft.)
F300	26	7/34	.015"	.051"	2
F301	24	7/32	.015"	.056"	3
F302	22	7/30	.015"	.062"	4
F303	20	10/30	.015"	.069"	6
F304	18	16/30	.015"	.079"	8
F305	16	26/30	.015"	.019"	10

UL Style 1015 - 1028 CSA Style TEW 600V -55° C to +105° C

PART NUMBER	CONDUCTOR SIZE	STRANDING	NOMINAL INSULATION THICKNESS	NOMINAL O.D.	APPROX WEIGHT (lb/Mft.)
F400	24	7/32	.031"	.086"	5
F401	22	7/30	.031"	.095"	6
F402	20	10/30	.031"	.102"	8
F403	18	16/30	.031"	.112"	10
F404	16	26/30	.031"	.125"	14
F405	14	41/30	.031"	.142"	20
F406	12	65/30	.031"	.158"	28
F407	10	105/29	.031"	.183"	40
F408	8	133/29	.045"	.250"	61

UL Style 1061 CSA Style T-2 600V -40° C to +80° C

PART NUMBER	CONDUCTOR SIZE	STRANDING	NOMINAL INSULATION THICKNESS	NOMINAL O.D.	APPROX WEIGHT (lb/Mft.)
F150	28	7/36	.010"	.89"	2
F152	26	7/34	.010"	.99"	2
F154	24	7/32	.010"	1.22"	3
F156	22	7/30	.010"	1.27"	4
F158	20	7/28	.010"	1.47"	6

Toll Free...MI - 877-789-1626

TN - 877-853-8106



hook - up - wire

UL Style 1213 Teflon Type E - Extruded 600V -65° C to +200° C

PART NUMBER	TYPE DESIGNITION	CONDUCTOR SIZE	CONDUCTOR STRAND	NOMINAL INSULATION THICKNESS	NOMINAL O.D.	APPROX WEIGHT (lb/Mft.)
F698	E-30	30	7/38	.010"	.032	1
F699	E-28	28	7/36	.010"	.035	1.23
F700	E-26	26	7/34	.010"	.039"	1.7
F701	E-24	24	7/32	.010"	.045"	3
F702	E-24	24	19/36	.010"	.044"	3
F703	E-22	22	7/30	.010"	.051"	4
F704	E-22	22	19/34	.010"	.050"	4
F705	E-20	20	7/28	.010"	.059"	6
F706	E-20	20	19/32	.010"	.058"	6
F707	E-18	18	19/30	.010"	.070"	9
F708	E-16	16	19/29	.010"	.077"	12
F709	E-14	14	19/27	.012"	.094"	16
F710	E-12	12	19/25	.012"	.113"	24
F711	E-10	10	37/26	.012"	.134"	36

Description:

Teflon Type E & EE - Extruded Single conductor stranded silver plated copper, TFE extruded *Teflon insulation. Resistant to acid, alkalis, oil, flame, moisture, solvents and fungus.

SPECIFY COLOR

UL Style 1180 Teflon Type EE - Extruded 1000V -65° C to +200° C

PART NUMBER	TYPE DESIGNITION	CONDUCTOR SIZE	CONDUCTOR STRAND	NOMINAL INSULATION THICKNESS	NOMINAL O.D.	APPROX WEIGHT (lb/Mft.)
F720	E-24	24	19/36	.014"	.055"	4
F721	EE-22	22	7/30	.014"	.060"	6
F722	EE-22	22	19/34	.014"	.062"	6
F723	EE-20	20	7/28	.014"	.068"	7
F724	EE-20	20	19/32	.014"	.070"	7
F725	EE-18	18	19/30	.014"	.080"	9
F726	EE-16	16	19/29	.014"	.089"	13
F727	EE-14	14	19/27	.017"	.106"	18
F728	EE-12	12	19/25	.017"	.124"	24
F729	EE-10	10	37/26	.017"	.145"	37
F730	EE-8	8	133/29	.020"	.210"	56

UL Style 1171 Teflon Type ET - Extruded 1000V -65° C to +200° C

PART NUMBER	TYPE DESIGNITION	CONDUCTOR SIZE	CONDUCTOR STRAND	NOMINAL INSULATION THICKNESS	NOMINAL O.D.	APPROX WEIGHT (lb/Mft.)
F660	MIL-16878/6	28	7/36	.006	.027	1.0
F661	MIL-16878/6	30	7/38	.006	.024	1.0



hook - up - wire

Type B - Uncovered 600V -55° C to +105° C

PART NUMBER	TYPE DESIGNITION	CONDUCTOR SIZE	STRAND	NOMINAL INSULATION THICKNESS	NOMINAL O.D.	APPROX WEIGHT (lb/Mft.)
F738	B-28	28	7/36	.010"	.035"	2
F740	B-24	24	7/32	.010"	.043"	3
F741	B-24	24	19/36	.010"	.043"	3
F742	B-22	22	7/30	.010"	.050"	4
F743	B-22	22	19/34	.010"	.050"	4
F744	B-20	20	7/28	.010"	.058"	5
F745	B-20	20	19/32	.010"	.058"	5
F746	B-18	18	7/26	.010"	.068"	7
F747	B-18	18	19/30	.010"	.068"	7
F748	B-16	16	19/29	.010"	.077"	10
F749	B-14	14	19/27	.010"	.091"	15

Description:

Type B - Uncovered PVC Stranded tinned copper, color coded. .010" polyvinylchloride insulation. Resistant to acids, alkalis, oil, flame, moisture, solvents and fungus.

SPECIFY COLOR

Type C - Uncovered 1000V -55° C to +105° C

PART NUMBER	TYPE DESIGNITION	CONDUCTOR SIZE	STRAND	NOMINAL INSULATION THICKNESS	NOMINAL O.D.	APPROX WEIGHT (lb/Mft.)
F750	MIL-W-76C	24	7/32	.015	.057	3
F751	MIL-W-76C	24	19/36	.015	.057	3
F752	MIL-W-76C	22	7/30	.015	.062	4
F753	MIL-W-76C	22	19/34	.015	.062	4
F754	MIL-W-76C	20	10/30	.015	.070	5
F755	MIL-W-76C	20	19/32	.015	.073	5
F756	MIL-W-76C	18	16/30	.015	.079	7
F757	MIL-W-76C	18	16/30	.015	.079	7
F739	MIL-W-76C	26	7/34	.015	.051	2
F758	MIL-W-76C	16	36/30	.015	.095	11
F759	MIL-W-76C	14	41/30	.015	.110	16
F760	MIL-W-76C	12	65/30	.015	.131	24
F761	MIL-W-76C	10	105/30	.015	.145	36

Type D - Uncovered 3000V -55° C to +105° C

PART NUMBER	TYPE DESIGNITION	CONDUCTOR SIZE	STRAND	NOMINAL INSULATION THICKNESS	NOMINAL O.D.	APPROX WEIGHT (lb/Mft.)
F763	MIL-16878/3	18	7/26	.031	.110	8
F764	MIL-16878/3	16	19/29	.031	.120	13
F765	MIL-16878/3	14	19/27	.031	.134	19
F766	MIL-16878/3	12	19/25	.037	.160	28
F767	MIL-16878/3	10	37/26	.037	.182	40

Toll Free...MI - 877-789-1626
TN - 877-853-8106



high temperature

SRML Flexible Tinned Copper 600 Volts 200° C 150° C

PART NUMBER	AWG SIZE	UL STYLE	STRANDING	NOMINAL INSULATION THICK.	NOMINAL GLASS BRAID WALL THICK.	NOMINAL O.D. (inches)	APPROX. WGT. (Lb/Mft.)
F8205	18	3071/3172	7/.0152	.013"	.007"	.122	11
F8206	16	3071	7/.0192	.031"	.007"	.134	15
F8207	14	3071	7/.0242	.031"	.007"	.149	21
F8208	12	3074	19/.0185	.031"	.008"	.172	31
F8209	10	3075	19/.0234	.047"	.008"	.227	51
F8210	8	3125/3231	19/.0295	.063"	.009"	.292	83
F8211	6	3425/3231	19/.0372	.063"	.009"	.332	120
F8212	4	3125/3231	19-7/.0180	.063"	.009"	.412	184
F8214	2	3231	19-7/.0223	.063"	.009"	.481	273
F8215	1	3234	37-7/.0180	.080"	.010"	.570	362
F8216	1/0	3231	37-7/.0202	.080"	.010"	.616	442
F8217	2/0	3231	37-7/.0227	.080"	.010"	.669	544
F8218	3/0	3231	37-7/.0255	.080"	.012"	.732	674
F8219	4/0	3231	37-7/.0286	.080"	.012"	.797	829

Description:

Conductor:

Coated, annealed copper conductor, per ASTM B33, and B174.

Insulation:

Consists of silicone rubber.

Insulation Covering:

Braided glass yarn jacket, treated with a flame, heat and moisture resisting finish.

Application:

For internal wiring appliances and electrical equipment where moisture cold and/or heat may be present.



high temperature

TGGT Single Conductor - 600 Volts 250° C

PART NUMBER	AWG SIZE	STRANDING	NOMINAL TFE WALL THICK.	NOMINAL ASBESTOS WALL THICK.	NOMINAL GLASS BRAID WALL THICK.	NOMINAL OVERALL DIA.	APPROX. WGT. (Lb/Mft.)
F8300	18	13/.010	.015"	.013"	.007"	.122	11
F8301	16	26/.010	.015"	.031"	.007"	.134	15
F8302	14	41/.010	.015"	.031"	.007"	.149	21
F8303	12	65/.010	.015"	.031"	.008"	.172	31
F8304	10	105/.010	.015"	.047"	.008"	.227	51
F8305	8	133/0111	.015"	.063"	.009"	.292	83
F8306	6	133/.0141	.015"	.063"	.009"	.332	120
F8307	4	133/.0177	.015"	.063"	.009"	.412	184
F8308	2	133/.0223	.015"	.063"	.009"	.481	273
F8309	1	259/.0180	.015"	.080"	.010"	.570	362
F8310	1/0	259/.0202	.015"	.080"	.010"	.616	442
F8311	2/0	259/.0227	.015"	.080"	.010"	.669	544
F8312	3/0	259/.0255	.015"	.080"	.012"	.732	674
F8313	4/0	259/.0286	.015"	.080"	.012"	.797	829

Description:

Conductor:

Nickel coated copper conductor

Insulation:

Composite insulation consists of Teflon*TFE tape wrapped in concentric layers, a wall of felted asbestos impregnated with a flame-retardant , high temperature finish, and a closely woven glass braid impregnated with a teflon finish.

Application:

For use in internal wiring of domestic, commercial and industrial heating and cooking equipment in both damp and dry applications.

*Dupont Registered Trademark

MG Single Conductor - 600 Volts 538° C

MG - Flexible Stranding 27% Nickel Coated Copper

PART NUMBER	AWG SIZE	STRANDING	NOMINAL MICA THICK.	NOMINAL ASBESTOS WALL THICK.	NOMINAL GLASSBESTOS WALL THICK.	NOMINAL OVERALL DIAMETER	APPROX. WEIGHT (lb/Mft.)
F8350	18	16/.010	.015"	.027"	.025"	.18"	18
F8351	16	26/.010	.015"	.027"	.025"	.20"	22
F8352	14	41/.010	.015"	.027"	.025"	.21"	29
F8353	12	65/.010	.015"	.027"	.025"	.23"	39
F8354	10	105/.010	.015"	.027"	.025"	.26"	52
F8355	8	133/.0111	.020"	.027"	.025"	.34"	102
F8356	6	133/.0142	.020"	.027"	.025"	.39"	120
F8357	4	133/.0179	.020"	.027"	.025"	.44"	176
F8358	2	133/.0223	.020"	.027"	.025"	.51"	265

Description:

Conductor:

Nickel coated copper conductor

Insulation:

Composite insulation consists of Mica/Glass tapes and felted asbestos.

Jacket Overall:

Glassbestos braid impregnated with high temperature silicone finish.

Application:

For use in internal wiring of domestic, commercial apparatus, and motor lead wire with operating temperatures from 150° C to 583° C.

Toll Free...MI - 877-789-1626
TN - 877-853-8106

welding cable & diesel locomotive

Welding Cable

PART NUMBER	AWG SIZE	NOMINAL STRANDING	NOMINAL O.D.	AMPS.	APPROX WEIGHT (lb/Mft.)
F1500	6	266	.350"	75	140
F1501	4	420	.420"	100	200
F1502	3	532	.440"	150	240
F1503	2	665	.480"	200	290
F1504	1	836	.520"	250	340
F1505	1/0	1064	.580"	300	440
F1506	2/0	1323	.640"	375	540
F1507	3/0	1666	.700"	450	680
F1508	4/0	2107	.820"	550	840
F1509	250MCM	2499	.860"	600	940
F1510	500MCM	5054	1.160"	900	1985

Description:

Arc Welding, Flexible, rope-stranding copper conductor to ASTM B172. Class K stranding-30 AWG. Separator between conductor and jacket provides for added flexibility and ease of stripping. Tough but resilient compound, designed to meet or exceed the physical and electrical requirements of IPCEA S-19-81 600 Volts spark test. NEMA WC3-1964.

Application:

Resistance welding leads connecting electrode holder to welder. Resistant to heat, flame, chemical and oil environments. Tough jacket resists compression cutting, abrasion and rough handling.

Diesel Locomotive Cable 600-2000V 90° C

PART NUMBER	AWG SIZE	STRANDING NO/AWG	NOMINAL O.D.	AMPS.	APPROX WEIGHT (lb/Mft.)
F1400	16	19/29	.21"	4	26
F1401	14	19/27	.22"	4	32
F1402	12	19/25	.24"	4	42
F1403	10	27/24	.27"	4	61
F1404	8	37/24	.32"	5	85
F1405	6	61/24	.38"	5	134
F1406	4	105/24	.44"	5	192
F1407	2	150/24	.52"	5	255
F1408	1	225/24	.61"	6	390
F1409	1/0	275/24	.64"	6	456
F1410	2/0	325/24	.68"	6	530
F1411	4/0	550/24	.82"	6	867
F1412	262,600	646/24	.93"	7	1030
F1413	313,100	777/24	1.01"	7	1235
F1414	373,700	925/24	1.07"	7	1440
F1415	444,400	1110/24	1.14"	7	1620
F1416	535,300	1332/24	1.27"	8	2035

Description:

Diesel locomotive. Single conductor. flexible strand, coated copper, separator Hypalon insulation/jacket.

Application:

Portable power cable for drilling rigs. On-shore or off-shore Diesel-electric locomotives. Railroad and transit car wiring. Earth moving equipment.

Specification:

Designed and manufactured for application and conditions covered by AAR and IPCEA S-19-81.



control cable

VNTC - Unshielded 600V 90° Dry - 75° C

16 AWG 26 Strand

PART NUMBER	Number of Conductors	Nominal Jacket Thick.	Nominal O.D.	Approx. Wgt. (Lb/Mft.)
F5802	2 Flat	45	.22x.32"	49
F5803	3	45	.34"	66
F5804	4	45	.37"	79
F5805	5	45	.40"	94
F5806	6	45	.43"	109
F5807	7	45	.43"	118
F5808	8	45	.46"	133
F5809	9	45	.49"	147
F5810	10	45	.51"	162
F5811	12	45	.57"	202
F5812	15	60	.62"	243
F5813	19	60	.67"	296
F5814	20	60	.69"	310
F5815	24	60	.74"	367
F5816	25	60	.75"	379
F5817	26	60	.76"	391
F5818	30	60	.82"	456
F5819	36	80	.92"	564
F5820	37	80	.92"	580

14 AWG 19 Strand

PART NUMBER	Number of Conductors	Nominal Jacket Thick.	Nominal O.D.	Approx. Wgt. (Lb/Mft.)
F5822	2	45	.23x.35"	64
F5823	3	45	.37"	87
F5824	4	45	.40"	107
F5825	5	45	.44"	147
F5826	6	45	.47"	147
F5827	7	45	.47"	162
F5828	8	45	.51"	221
F5829	9	60	.57"	221
F5830	10	60	.60"	237
F5831	12	60	.63"	281
F5832	15	60	.69"	340
F5833	19	60	.74"	408
F5834	20	60	.76"	424
F5835	24	60	.83"	508
F5836	25	60	.84"	526
F5837	26	80	.89"	582
F5838	30	80	.95"	666
F5839	36	80	1.02"	780
F5840	37	80	1.02"	794

Description:

Conductor:

Bare soft annealed copper.

Insulation:

High dielectric PVC UL-83 Par. 16.1 Class THH-90°C for THWN or THHN UL-62 Part 22 Class 12B-90°C for TFFN

Insulation Armor:

Nylon UL-83 Par. 25.1 and Part 26 for THWN or THHN UL-62 Part 60 and Par. 64.4 for TFFN

Cabling:

Conductors are assembled round with nylon filters as needed. A mylar tape binder is applied over the assembly

12 AWG 19 Strand

PART NUMBER	Number of Conductors	Nominal Jacket Thick.	Nominal O.D.	Approx. Wgt. (Lb/Mft.)
F5842	2 Flat	45	.25x.39"	83
F5843	3	45	.41"	113
F5844	4	45	.44"	145
F5845	5	45	.48"	175
F5846	6	45	.53"	199
F5847	7	45	.53"	223
F5848	8	45	.60"	268
F5849	9	60	.64"	304
F5850	10	60	.70"	388
F5851	12	60	.70"	388
F5852	15	60	.77"	466
F5853	19	60	.83"	581
F5854	20	80	.90"	647
F5855	24	80	.97"	768
F5856	25	80	.94"	796
F5857	26	80	1.00"	822
F5858	30	80	1.06"	938
F5859	36	80	1.15"	1106
F5860	37	80	1.15"	1134

10 AWG 19 Strand

PART NUMBER	Number of Conductors	Nominal Jacket Thick.	Nominal O.D.	Approx. Wgt. (Lb/Mft.)
F5862	2	45	.29x.46"	115
F5863	3	45	.49"	167
F5864	4	45	.53"	212
F5865	5	60	.61"	269
F5866	6	60	.66"	317
F5867	7	60	.66"	352
F5868	8	60	.72"	399
F5869	9	60	.77"	445
F5870	10	60	.80"	490
F5871	12	60	.84"	579

Overall Jacket:

PVC Class 12, 90°C per UL-62 Part 20

Color Code:

IPCEA Method K-2

Application:

UL listed and recognized for installation in trays, wireways, troughs, channels, duct and conduit. Recognized for use in Class 1, Division 2 in hazardous locations. Cables may be installed indoors, outdoors, where sunlight resistant rating is required, and in wet or dry locations. Cables with #16 AWG and larger conductors may be direct buried. Designed for control, power, lighting, telemetering, signals and relay or traffic control.

*Add "S" to any part number for shielded product

Toll Free...MI - 877-789-1626
TN - 877-853-8106



tray cable

Unshielded Tray Cable

UL Type TC, 600V, 90°C dry / 75° wet rated lead free

18 AWG Type TFN

PART NUMBER	# of CONDUCTORS	JACKET THICKNESS		NOMINAL DIAMETER OVER JACKET		APPROXIMATE NET CABLE WEIGHT		AMPACITY AMPS
		MILS	MM	INCHES	MM	LB/KFT	KG/KM	
F5772Q	2	45	1.14	.270	6.86	35	52	6.0
F5773	3	45	1.14	.288	7.31	45	67	6.0
F5774Q	4	45	1.14	.311	7.91	54	80	4.8
F5775	5	45	1.14	.337	8.56	66	98	4.8
F5776Q	6	45	1.14	.364	9.25	76	113	4.8
F5777	7	45	1.14	.364	9.25	82	122	4.2
F5778	8	45	1.14	.392	9.95	92	137	4.2
F5779	9	45	1.14	.421	10.69	108	160	4.2
F5780	10	45	1.14	.448	11.37	117	175	3.0
F5781	11	45	1.14	.454	11.53	122	182	3.0
F5782	12	45	1.14	.468	11.87	131	195	3.0

Shielded Tray Cable

UL Type TC, 600V, 90°C dry / 75° wet rated - lead free

18 AWG Type TFN

PART NUMBER	# of CONDUCTORS	JACKET THICKNESS		NOMINAL DIAMETER OVER JACKET		APPROXIMATE NET CABLE WEIGHT		AMPACITY AMPS
		MILS	MM	INCHES	MM	LB/KFT	KG/KM	
F5772SQ	2	45	1.14	.280	7.11	38	57	6.0
F5773SQ	3	45	1.14	.294	7.47	49	73	6.0
F5774SQ	4	45	1.14	.317	8.06	56	83	4.8
F5775S	5	45	1.14	.343	8.71	73	108	4.8
F5776SQ	6	45	1.14	.370	9.40	82	122	4.8
F5777S	7	45	1.14	.370	9.40	87	121	4.2
F5778S	8	45	1.14	.404	10.26	92	150	4.2
F5779S	9	45	1.14	.433	10.99	108	167	4.2
F5780S	10	45	1.14	.460	11.68	117	188	3.0
F5781S	11	45	1.14	.466	11.84	122	193	3.0
F5782S	12	45	1.14	.480	12.18	131	202	3.0



tinned copper braid

Flat Braid

PART NUMBER	NOM. FLAT WIDTH	NOM. THKNS	AWG. OF INDIV. ENDS	CARRIERS	TOTAL NO. OF INDIV. ENDS	APPROX. AWG EQUIV.	NOM. CIRC. MILLS	CURRENT CARRYING CAP(AMPS)	APPROX WGT. LBS/M*
F900	.025"	.015	36	8	8	27	200	4.0	1
F901	1/32"	.020	36	16	16	24	400	6.0	2
F902	3/64"	.020	36	24	24	22	600	7.0	2
F903	3/32"	.020	36	16	48	19	1200	11.0	4
F904	1/8"	.020	36	24	72	18	1800	16.0	6
F905	3/16"	.020	36	24	120	15	3000	25.0	10
F906	1/4"	.030	36	24	168	14	4200	32.0	14
F907	3/8"	.030	36	48	288	12	7200	46.0	25
F908	1/2"	.030	36	48	384	10	9600	53.0	34
F909	5/8"	.030	36	48	384	10	9600	53.0	32
F910	3/4"	.040	36	48	832	7	20800	85.0	65
F911	1"	.045	36	48	832	7	20800	85.0	77
F912	1-3/8"	.050	30	48	336	5	33700	100.0	79
F913	1-1/2"	.060	30	48	528	3	53064	150.0	186
F914	1-3/4"	.080	30	48	1248	00	125424	280.0	451
F915	2"	.120	30	48	1536	000	154368	310.0	512
F916	3"	.200	30	48	2256	0000	225000	390.0	775

Description:
Tinned copper, woven braid which is rolled flat to a specific width depending upon construction. Each strand is soft drawn tinned copper to QQW343, type ASTM-B-33

Application:
Good current carrying capacity. Extremely flexible. It is used as a high current conductor at low voltages. Battery grounding. Small motor leads. Bonding strap. Because of its flexibility it is used on moving parts.

Tubular Braid - QQ-B-575A

PART NUMBER	NOM. ID WHEN GRND.	AWG. OF INDIV. ENDS	CARRIERS	TOTAL NO. OF INDIV. ENDS	APPROX. AWG EQUIV.	NOM. CIRC. MILLS	CURRENT CARRYING CAP(AMPS)	APPROX WGT. LBS/M*
F930	1/32"	36	24	24	22	200	7.0	4
F931	1/16"	36	24	48	19	400	11.0	7
F932	5/64"	36	24	72	18	600	16.0	8
F933	7/64"	36	24	96	16	1200	19.0	11
F934	1/8"	36	24	120	15	1800	25.0	13
F935	5/32"	36	24	240	12	3000	40.0	23
F936	11/64"	36	24	168	14	4200	32.0	29
F937	13/64"	34	24	192	11	7200	46.0	36
F938	1/4"	36	24	384	10	9600	53.0	38
F939	9/32"	30	24	120	9	9600	60.0	40
F940	3/8"	36	48	384	10	20800	53.0	42
F941	7/16"	30	24	240	6	20800	90.0	84
F942	1/2"	36	48	528	9	33700	62.0	60
F943	9/16"	30	48	480	3	53064	145.0	154
F944	21/32"	30	48	768	1	125424	190.0	253
F945	25/32"	36	48	864	7	154368	88.0	82

Description:
Tinned copper, woven braid manufactured completely tubular, per Mil Spec QQ-B-575. Each strand is soft drawn tinned copper wire to QQ-W-343, type S, ASTM-B-33, percentage of shielding coverage is 95% or more.

Application:
Maximum shielding for wires, cables and other components. For R.F. or electrostatic interference as well as mechanical protection.

Toll Free...MI - 877-789-1626
TN - 877-853-8106

portable cord

Neoprene Jacket Type SO 600 Volt-Black

PART NUMBER	AWG Size	Stranding	Nominal Insulation Thickness	Nominal O.D.	Current AMPS	Approx. Wgt. (Lb/Mft.)
F1100	18/2	16/30	1/32"	.375"	10	92
F1101	18/3	16/30	1/32"	.390"	10	104
F1102	18/4	16/30	1/32"	.420"	7	120
F1103	16/2	26/30	1/32"	.400"	13	96
F1104	16/3	26/30	1/32"	.420"	13	124
F1105	16/4	26/30	1/32"	.450"	10	156
F1106	14/2	41/30	3/64"	.527"	18	168
F1107	14/3	41/30	3/64"	.557"	18	200
F1108	14/4	41/30	3/64"	.602"	15	224
F1109	12/2	65/30	3/64"	.597"	25	216
F1110	12/3	65/30	3/64"	.632"	25	260
F1111	12/4	65/30	3/64"	.662"	20	292
F1112	10/2	105/30	3/64"	.637"	30	260
F1113	10/3	105/30	3/64"	.687"	30	332
F1114	10/4	105/30	3/64"	.742"	25	388
F1115	*8/2	133/30	.050"	.700"	40	332
F1116	*8/3	133/29	.050"	.750"	40	418
F1117	*8/4	133/29	.050"	.820"	35	564
F1118	*8/5	133/29	.050"	.885"	28	675
F1119	*6/2	133/27	.060"	.975"	55	428
F1120	*6/3	133/27	.060"	1.090"	55	588
F1121	*6/4	133/27	.060"	.975"	45	720
F1122	*6/5	133/27	.060"	1.050"	36	880
F1123	*4/2	133/25	.060"	1.140"	70	593
F1124	*4/3	133/25	.063"	1.260"	70	796
F1125	*4/4	133/25	.063"	1.140"	60	992
F1126	*4/5	133/25	.063"	1.260"	48	1210
F1127	*2/2	133/23	.063"	1.140"	95	851
F1128	*2/3	133/23	.063"	1.210"	95	1115
F1129	*2/4	133/23	.063"	1.335"	80	1440
F1130	*2/5	133/23	.063"	1.500"	65	2840

Neoprene Jacket Type SJO 300 Volt-Black

PART NUMBER	AWG Size	Stranding	Nominal Insulation Thickness	Nominal O.D.	Current AMPS	Approx. Wgt. (Lb/Mft.)
F1131	18/2	16/30	1/32"	.300"	10	56
F1132	18/3	16/30	1/32"	.325"	10	72
F1133	18/4	16/30	1/32"	.350"	7	96
F1134	16/2	26/30	1/32"	.325"	13	69
F1135	16/3	16/30	1/32"	.350"	13	92
F1136	16/4	26/30	1/32"	.385"	10	116
F1137	14/3	41/30	1/32"	.365"	18	112
F1138	14/4	41/30	1/32"	.415"	18	136
F1139	12/3	65/30	1/32"	.455"	25	189
F1140	12/4	65/30	1/32"	.500"	25	225

PVC Jacket Type STO 600 Volt 60° C

PART NUMBER	AWG Size	Stranding	Nom. Insul. (In.)	Nom. Jacket (In.)	Nom. O.D. (In.)	AMP	Approx. Wgt. (LB/Mft.)
F1730	18/2	16/30	.030"	.060"	.355	10	72
F1731	18/3	16/30	.030"	.060"	.370	10	84
F1732	18/4	16/30	.030"	.060"	.400	7	100
F1733	16/2	26/30	.030"	.060"	.380	13	78
F1734	16/3	26/30	.030"	.060"	.400	13	100
F1735	16/4	26/30	.030"	.060"	.430	10	129
F1736	16/5	26/30	.030"	.060"	.530	8	203
F1737	14/2	41/30	.045"	.080"	.520	18	133
F1738	14/3	41/30	.045"	.080"	.545	18	162
F1739	14/4	41/30	.045"	.080"	.590	15	197
F1740	12/2	65/30	.045"	.080"	.595	25	173
F1741	12/3	65/30	.045"	.080"	.625	25	215
F1742	12/4	65/30	.045"	.080"	.675	20	259
F1743	10/2	105/30	.045"	.080"	.650	30	209
F1744	10/3	105/30	.045"	.080"	.680	30	273
F1745	10/4	105/30	.045"	.080"	.740	20	335

PVC Jacket Type SJTO 300 Volt 60° C

PART NUMBER	AWG Size	Stranding	Nom. Insul. (In.)	Nom. Jacket (In.)	Nom. O.D. (In.)	AMP	Approx. Wgt. (LB/Mft.)
F1746	18/2	16/30	.030"	.030"	.295	10	44
F1747	18/3	16/30	.030"	.030"	.310	10	52
F1748	18/4	16/30	.030"	.030"	.340	7	78
F1749	16/2	26/30	.030"	.030"	.320	13	54
F1750	16/3	26/30	.030"	.030"	.335	13	73
F1751	16/4	26/30	.030"	.030"	.370	10	92
F1752	14/2	41/30	.030"	.030"	.355	18	71
F1753	14/3	41/30	.030"	.030"	.375	18	87
F1754	14/4	41/30	.030"	.030"	.410	15	116
F1755	12/2	65/30	.030"	.045"	.430	25	102
F1756	12/3	65/30	.030"	.045"	.455	25	135
F1757	12/4	65/30	.030"	.045"	.500	20	166

Some sizes available with yellow jacket
 Note: Check factory for #10 AWG SJ & SJO
 Portable cord meets IPCEA A-19-81 NEMA
 Publication WC-3 UL Subject 62 Class 3, MSHA
 *#8 AWG and larger not U.L. listed



portable control cable

TYPE SOOW-A/SO - 600 VOLTS NEOPRENE JACKET

18 Gauge 16/30 Strands

PART NUMBER	AWG Size	No of Cond.	Nom. O.D. (In.)	AMP	Approx. Wgt. (LB/Mft.)
F1001	18	5	.482"	5.6	72
F1002	18	6	.517"	5.6	84
F1003	18	7	.517"	4.9	100
F1004	18	8	.554"	4.9	78
F1005	18	10	.635"	4.9	100
F1006	18	12	.654"	4.9	129
F1007	18	14	.713"	4.9	203
F1008	18	16	.749"	4.9	133
F1009	18	18	.783"	4.9	162
F1010	18	20	.820"	4.9	197
F1011	18	30	.950"	4.2	173
F1012	18	36	1.050"	4.2	215
F1013	18	39	1.086"	4.2	259
F1014	18	44	1.168"	3.5	209
F1015	18	52	1.215"	3.5	273
F1016	18	60	1.315"	3.5	335

14 Gauge 41/30 Strands

PART NUMBER	AWG Size	No of Cond.	Nom. O.D. (In.)	AMP	Approx. Wgt. (LB/Mft.)
F1037	14	5	.636"	12	319
F1038	14	6	.720"	12	350
F1039	14	7	.720"	10.5	394
F1040	14	8	.775"	10.5	410
F1041	14	9	.825"	10.5	455
F1042	14	10	.895"	10.5	475
F1043	14	12	.925"	10.5	545
F1044	14	14	.965"	10.5	650
F1045	14	16	1.050"	10.5	725
F1046	14	18	1.100"	10.5	800
F1047	14	20	1.155"	10.5	860
F1048	14	24	1.300"	10.5	1005
F1049	14	30	1.380"	9	1180
F1050	14	37	1.600"	9	1385
F1051	14	44	1.685"	7.5	1670
F1052	14	52	1.730"	7.5	1965
F1053	14	60	1.865"	7.5	2225

16 Gauge 26/30 Strands

PART NUMBER	AWG Size	No of Cond.	Nom. O.D. (In.)	AMP	Approx. Wgt. (LB/Mft.)
F1017	16	5	.513"	8	177
F1018	16	6	.553"	8	214
F1019	16	7	.553"	7	236
F1020	16	8	.594"	7	252
F1021	16	9	.633"	7	294
F1022	16	10	.715"	7	310
F1023	16	12	.735"	8	345
F1024	16	14	.767"	7	375
F1025	16	16	.806"	7	425
F1026	16	18	.844"	7	475
F1027	16	20	.844"	7	520
F1028	16	22	.922"	7	570
F1029	16	24	1.003"	7	670
F1030	16	27	1.023"	6	685
F1031	16	30	1.053"	6	760
F1032	16	37	1.113"	6	840
F1033	16	39	1.174"	6	890
F1034	16	44	1.294"	5	1040
F1035	16	52	1.346"	5	1190
F1036	16	60	1.424"	5	1340

12 Gauge 65/30 Strands

PART NUMBER	AWG Size	No of Cond.	Nom. O.D. (In.)	AMP	Approx. Wgt. (LB/Mft.)
F1054	12	5	.735"	16	355
F1055	12	6	.790"	16	437
F1056	12	7	.790"	14	460
F1057	12	8	.855"	14	920
F1058	12	9	.915"	14	802
F1059	12	10	1.020"	14	640
F1060	12	12	1.055"	14	715
F1061	12	14	1.105"	14	850
F1062	12	16	1.168"	14	935
F1063	12	18	1.255"	14	1030
F1064	12	20	1.315"	14	1100
F1065	12	36	1.653"	12	1775
F1066	12	44	1.885"	10	2276
F1067	12	52	1.970"	10	2550
F1068	12	60	2.085"	10	2890

10 Gauge 105 Strands

PART NUMBER	AWG Size	No of Cond.	Nom. O.D. (In.)	AMP	Approx. Wgt. (LB/Mft.)
F1069	10	5	.830"	24	460
F1070	10	6	.865"	24	556
F1071	10	7	.865"	21	714
F1072	10	8	.935"	21	748
F1073	10	10	1.120"	21	980
F1074	10	12	1.150"	21	1020
F1075	10	20	1.440"	17.5	1445

Toll Free...MI - 877-789-1626
TN - 877-853-8106



type G & type GGC 600/2000 Volt 90°

2 Conductor - Type G

Part Number	AWG Size	Conductor Stranding	Ground Conductor AWG Size	Nominal Insulation Thickness	Nominal O.D. (inches)	Current *AMPS	Approx. Wgt. (Lb/Mft.)
F1650	8	133	2#10	.060	.810	72	495
F1651	6	259	2#10	.060	.930	95	650
F1652	4	259	2#10	.060	1.080	127	940
F1653	3	259	2#6	.060	1.170	145	1150
F1654	2	259	2#6	.060	1.270	167	1360
F1655	1	259	2#5	.080	1.440	191	1730
F1656	1/0	259	2#4	.080	1.520	217	2000
F1657	2/0	259	2#3	.080	1.650	250	2240
F1658	3/0	259	2#2	.080	1.770	286	2860
F1659	4/0	259	2#1	.080	1.920	328	3500

Description:

Excellent impact and abrasion resistance. Withstand exposure to oil, acids, alkalis, heat, moisture and most chemicals. Indent printed for easy identification. Rope lay stranding for maximum flex life. Cable core bound for superior flexibility and toughness. Formed rubber fillers.

3 Conductor - Type GGC

Part Number	AWG Size	Conductor Stranding	Ground Conductor AWG Size	Nominal Insulation Thickness	Nominal O.D. (inches)	Current *AMPS	Approx. Wgt. (Lb/Mft.)
F1670	8	133	2#10	.060	1.005	59	693
F1671	6	259	2#10	.060	1.085	79	870
F1672	4	259	2#8	.060	1.190	104	1260
F1673	3	259	2#8	.060	1.250	120	1460
F1674	2	259	2#7	.060	1.340	138	1650
F1675	1	259	2#6	.080	1.510	161	2100
F1676	1/0	259	2#5	.080	1.650	186	2550
F1677	2/0	259	2#4	.080	1.750	215	3020
F1678	3/0	259	2#3	.080	1.890	249	3660
F1679	4/0	259	2#2	.080	2.040	287	4410
F1680	250	627	2#2	.095	2.390	320	6060
F1681	300	741	2#1	.095	2.560	357	6700
F1682	350	855	2#1/0	.095	2.680	394	7400
F1683	400	988	2#1/0	.095	2.820	430	8650
F1684	500	1235	2#2/0	.095	3.030	487	10100

Application:

Heavy duty service as power supply cable. Mobile and portable electrical equipment. 2 Conductor - use with single phase AC systems where grounding is required. 3 & 4 Conductor - use on three phase AC systems where grounding is required.

*Ampacities are based on 90° insulation per IPCEA S-68-516, NEMA WC-8 (latest edition).

Ampacities for portable cables are based on an ambient temperature of 40° and are shown as amperes per conductor.

4 Conductor - Type G

Part Number	AWG Size	Conductor Stranding	Ground Conductor AWG Size	Nominal Insulation Thickness	Nominal O.D. (inches)	Current *AMPS	Approx. Wgt. (Lb/Mft.)
F1690	8	133	4#12	.060	1.025	54	830
F1691	6	259	4#12	.080	1.135	72	1030
F1692	4	259	4#10	.060	1.270"	93	1480
F1693	3	329	4#10	.060	1.340"	106	1830
F1694	2	259	4#9	.060	1.480"	122	2070
F1695	1	259	4#8	.080	1.680"	1432	2660
F1696	1/0	259	4#7	.080	1.790"	165	3140
F1697	2/0	259	4#6	.080	1.930"	192	3780
F1698	3/0	259	4#5	.080	2.070"	221	4500
F1699	4/0	259	4#4	.080	2.260"	255	5520



type "W" 600/2000 volt 90°

Type W Round 1 Conductor

Part Number	AWG Size	Stranding	Nominal Insulation Thickness	Nominal O.D.	Current AMPS	Approx. Wgt. (Lb/Mft.)
F1600	8	133	4/64	.44"	83	160
F1601	6	259	4/64	.51"	109	225
F1602	4	259	4/64	.57"	145	310
F1603	2	259	4/64	.66"	192	440
F1604	1	259	5/64	.74"	223	555
F1605	1/0	259	5/64	.77"	258	630
F1606	2/0	259	5/64	.82"	298	750
F1607	3/0	259	5/64	.87"	345	900
F1608	4/0	259	5/64	.93"	400	1080

Description:

Extra flexible coated copper conductors, 90° heat resistant ethylene propylene rubber insulation, reinforcing mesh separator over conductors neoprene jacket overall.

Type W Round 2 Conductor

Part Number	AWG Size	Stranding	Nominal Insulation Thickness	Nominal O.D.	Current AMPS	Approx. Wgt. (Lb/Mft.)
F1610	8	133	4/64	.81"	72	425
F1611	6	259	4/64	.93"	95	680
F1612	4	259	4/64	1.08"	127	820
F1613	2	259	4/64	1.27"	167	1170
F1614	1	259	5/64	1.44"	191	1490
F1615	1/0	259	5/64	1.52"	217	1710
F1616	2/0	259	5/64	1.65"	250	1880
F1617	3/0	259	5/64	1.77"	286	2420
F1618	4/0	259	5/64	1.92"	328	2940

Application:

- Mines
- Cranes
- Heavy industrial machinery
- Portable equipment

*Ampacities are based on 90° insulation per IPCEA S-68-516, NEMA WC-8 (latest edition).

Ampacities for portable cables are based on an ambient temperature of 40° and are shown as amperes per conductor.

Type W Round 3 Conductor

Part Number	AWG Size	Stranding	Nominal Insulation Thickness	Nominal O.D.	Current AMPS	Approx. Wgt. (Lb/Mft.)
F1620	8	133	4/64	.91"	59	590
F1621	6	259	4/64	1.01"	79	765
F1622	4	259	4/64	1.17"	104	1080
F1623	2	259	4/64	1.34"	138	1490
F1624	1	259	4/64	1.51"	161	1960
F1625	1/0	259	5/64	1.65"	186	2280
F1626	2/0	259	5/64	1.75"	215	2680
F1627	4/0	259	5/64	2.04"	287	3900
F1628	250	427	6/64	2.39"	320	5070
F1629	350	427	6/64	2.68"	394	6570
F1630	500	427	6/64	3.03"	487	8700

Type W Round 2 Conductor

Part Number	AWG Size	Stranding	Nominal Insulation Thickness	Nominal O.D.	Current AMPS	Approx. Wgt. (Lb/Mft.)
F1640	8	133	4/64	.99"	54	720
F1641	6	259	4/64	1.10"	72	945
F1642	4	259	4/64	1.27"	93	1330
F1643	2	259	4/64	1.48"	122	1890
F1644	1	259	5/64	1.66"	143	2450
F1645	1/0	259	5/64	1.79"	165	2870
F1646	2/0	259	5/64	1.79"	192	2870
F1647	3/0	259	5/64	2.07"	221	4050
F1648	4/0	259	5/64	2.26"	255	4970

Toll Free...MI - 877-789-1626
TN - 877-853-8106



medium voltage power cable

500 Volt, Single Conductor Non-Shielded - XLP Insulation MV90 Dry

PART NUMBER	SIZE AWG OR GENDER	NUMBER OF STRANDS	INSULATION THICKNESS MILS	NOMINAL DIAMETER INCHES	COPPER CONDUCTOR	
					APPROX. NET WT. LB./1000FT.	AMPACITY* CONDUIT
F10100	8	7	110	.39	90	55
F10102	6	7	110	.42	125	75
F10104	4	7	110	.47	180	97
F10106	2	7	110	.53	260	130
F10108	1	19	110	.57	325	155
F10110	1/0	19	110	.62	400	180
F10112	2/0	19	110	.66	490	205
F10114	3/0	19	110	.71	605	240
F10116	4/0	19	110	.77	750	280
F10118	250	37	120	.83	890	315
F10120	350	37	120	.94	1215	385
F10122	500	37	120	1.05	1695	475
F10124	750	61	130	1.27	2500	600
F10126	1000	61	130	1.43	3320	690

*CONDUIT: Three cables in isolated conduit in air 90°C Conductor Temperature, 40° Ambient.

For other installation conditions, refer to the National Electrical Code.

NOTE: 1Size No. 8AWG with tinned copper conductor conforming to MIL-C-38359, Class 2 (3001-5000 Volts), Airport Lighting Cable available on request.

*Description:*Type MV-90 XLP power cables consist of a stranded, annealed copper conductor, with an extruded semi-conducting strand shield. They are insulated with an integral insulation/jacket of cross-linked polyethylene (XLP).

*Practical Applications:*For use in power circuits up to 5KV when installed in accordance with NEC requirements for non-shielded cables operating above 2,000 volts, and up to a maximum of 5,000 volts. UL listed as Type MV-90 for dry locations only. Also complies with ICEA Pub. No. S-66-524.

The above data is approximate and subject to normal manufacturing tolerances.



power cable, type MV-90

5000 Volt, Single Conductor, Shielded - XLP/PVC

PART NUMBER	SIZE AWG OR MCM	NUMBER OF STRANDS	THICKNESS IN MILLS		DIAMETER OVER INS. INCHES	NOMINAL DIAMETER INCHES	APPROX. NET WT. LB./1000 FT.	COPPER CONDUCTOR AMPACITY*	
			INSULATION	JACKET				DUCT	CONDUIT
F10130	8	7	90	60	.34	.56	155	64	55
F10132	6	7	90	60	.38	.60	195	85	75
F10134	4	7	90	60	.42	.65	255	110	97
F10136	2	7	90	60	.48	.71	345	145	130
F10138	1	19	90	60	.54	.77	450	170	155
F10140	1/0	19	90	60	.56	.78	480	195	180
F10142	2/0	19	90	80	.60	.87	610	220	205
F10144	3/0	19	90	80	.67	.94	760	250	240
F10146	4/0	19	90	80	.71	.98	880	290	280
F10148	250	37	90	80	.77	1.05	1045	320	315
F10150	350	37	90	80	.86	1.12	1345	385	385
F10152	500	37	90	80	.99	1.25	1840	470	475
F10154	750	61	90	80	1.19	1.45	2745	585	600
F10156	1000	61	90	80	1.34	1.63	3510	670	690

*DUCT: Three cables per duct, 90°C Conductor Temperature, 20° Ambient. One Circuit, 100% Circuit, 100% Load Factor, Rho=90°C.

*CONDUIT: Three cables in isolated conduit in air 90°C Conductor Temperature, 40° Ambient. For other installation conditions, refer to the National Electrical Code.

NOTES: 1 Cables may be direct buried where NEC jurisdiction applies if installed in a system with a grounding conductor that is in close proximity and conforms with NEC 250-51.

2 Upon request, sizes 250 MCM and larger can be manufactured and listed for installation in cable tray.

3 Copper metallic tape shield available on request.

4 CPE, Neoprene or Hypalon jacket may also be supplied

DESCRIPTION: Stranding annealed copper conductor shield, cross-linked polyethylene (XLP) insulation, semi-conductor shield, metallic wire shield, black polyvinyl chloride jacket.

APPLICATION: For use in power circuits up to 5KV when installed in accordance with NEC requirements. May be installed in conduit, cable tray (250 MCM and larger), underground duct, and aerially (when messenger supported). UL listed as type MV-90 for wet and dry locations. Also complies with IPEA Pub. No. S-66-524 (XLP).

5000 Volt, Single Conductor, Shielded - EPR/PVC

PART NUMBER	SIZE AWG OR MCM	NUMBER OF STRANDS	THICKNESS IN MILLS		DIAMETER OVER INS. INCHES	NOMINAL DIAMETER INCHES	APPROX. NET WT. LB./1000 FT.	COPPER CONDUCTOR AMPACITY*	
			INSULATION	JACKET				DUCT	CONDUIT
F10160	8	7	90	60	.34	.58	160	64	55
F10162	6	7	90	60	.38	.61	215	85	75
F10164	4	7	90	60	.42	.66	275	110	97
F10166	2	7	90	60	.48	.72	370	145	130
F10168	1	19	90	60	.52	.75	500	170	155
F10170	2/0	19	90	80	.61	.88	625	220	205
F10174	3/0	19	90	80	.66	.93	785	250	240
F10176	4/0	19	90	80	.71	.99	995	290	280
F10178	250	37	90	80	.76	1.03	1080	320	315
F10180	350	37	90	80	.86	1.14	1420	385	385
F10182	500	37	90	80	.99	1.27	1935	470	475
F10184	750	61	90	80	1.19	1.44	2780	585	600
F10186	1000	61	90	80	1.35	1.63	3590	670	690

*DUCT: Three cables per duct, 90°C Conductor Temperature, 20° Ambient. One Circuit, 100% Circuit, 100% Load Factor, Rho=90°C.

*CONDUIT: Three cables in isolated conduit in air 90°C Conductor Temperature, 40° Ambient. For other installation conditions, refer to the National Electrical Code.

NOTES: 1 CPE, Neoprene or Hypalon jacket may also be supplied.

2 Cables may be direct buried where NEC jurisdiction applies if installed in a system with a grounding conductor that is in close proximity and conforms with NEC 250-51.

DESCRIPTION: Stranding annealed copper conductor, conductor shield, ethylene propylene rubber (EPR) insulation, semi-conductor shield, copper tape shield, black polyvinyl chloride jacket.

APPLICATION: For use in power circuits up to 5KV when installed in accordance with NEC requirements. May be installed in conduit, cable tray (250 MCM and larger), underground duct, and aerially (when messenger supported). UL listed as type MV-90 for wet and dry locations. Also complies with IPEA Pub. No. S-68-516 (EPR).

THE ABOVE DATA IS APPROXIMATE AND SUBJECT TO NORMAL MANUFACTURING TOLERANCES.

Toll Free...MI - 877-789-1626
TN - 877-853-8106

52



power cable, type MV-90

15,000 Volt, Single Conductor, 100% Insulated Level (Grounded System) XLP/PVC

PART NUMBER	SIZE AWG OR MCM	NUMBER OF STRANDS	THICKNESS IN MILLS		DIAMETER OVER INS. INCHES	NOMINAL DIAMETER INCHES	COPPER CONDUCTOR APPROX. NET WT. LB./1000 FT.	COPPER CONDUCTOR AMPACITY*	
			INSULATION	JACKET				DUCT	CONDUIT
F10200	2	7	175	80	.70	.97	515	155	150
F10202	1	19	175	80	.74	1.02	590	175	170
F10204	1/0	19	175	80	.78	1.06	675	200	195
F10206	2/0	19	175	80	.83	1.10	785	230	225
F10208	3/0	19	175	80	.88	1.14	915	260	260
F10210	4/0	19	175	80	.94	1.21	1085	295	295
F10212	250	37	175	80	.99	1.27	1235	325	330
F10214	350	37	175	80	1.10	1.37	1600	390	395
F10216	500	37	175	80	1.24	1.50	2135	465	480
F10218	750	61	175	80	1.44	1.72	3015	565	585
F10220	1000	61	175	110	1.60	1.94	3990	640	675

*DUCT: Three cables per duct, 90°C Conductor Temperature, 20° Ambient. One Circuit, 100% Circuit, 100% Load Factor, Rho=90°C.

*CONDUIT: Three cables in isolated conduit in air 90°C Conductor Temperature, 40° Ambient. For other installation conditions, refer to the National Electrical Code.

NOTES: 1 Copper Metallic tape shield or extruded insulation shield available on request.

2 CPE, Neoprene or Hypalon jacket may also be supplied.

3 Cables may be direct buried where NEC jurisdiction applies if installed in a system with a grounding conductor that is in close proximity and conforms with NEC 250-51.

DESCRIPTION: Stranding annealed copper conductor, conductor shield, cross-linked polyethylene (XLP) insulation, semi-conductor shield, metallic wire shield, black polyvinyl chloride jacket.

APPLICATION: For use in power circuits up to 15KV when installed in accordance with NEC requirements. May be installed in conduit, cable tray (250 MCM and larger), underground duct, and aerially (when messenger supported). UL listed as type MV-90 for wet and dry locations. Also complies with IPEA Pub. No. S-66-524.

15,000 Volt, Single Conductor, 100% Insulated Level (Grounded System) XLP/PVC

PART NUMBER	SIZE AWG OR MCM	NUMBER OF STRANDS	THICKNESS IN MILLS		DIAMETER OVER INS. INCHES	NOMINAL DIAMETER INCHES	COPPER CONDUCTOR APPROX. NET WT. LB./1000 FT.	COPPER CONDUCTOR AMPACITY*	
			INSULATION	JACKET				DUCT	CONDUIT
F10224	2	7	175	80	.70	.97	555	155	150
F10226	1	19	175	80	.74	1.02	640	175	170
F10228	1/0	19	175	80	.78	1.06	720	200	195
F10230	2/0	19	175	80	.83	1.10	835	230	225
F10232	3/0	19	175	80	.88	1.14	975	260	260
F10234	4/0	19	175	80	.94	1.21	1150	295	295
F10236	250	37	175	80	.99	1.27	1310	325	330
F10238	350	37	175	80	1.10	1.37	1685	390	395
F10240	500	37	175	80	1.24	1.50	2225	465	480
F10242	750	61	175	80	1.44	1.72	3125	565	585
F10244	1000	61	175	110	1.60	1.94	4100	640	675

*DUCT: Three cables per duct, 90°C Conductor Temperature, 20° Ambient. One Circuit, 100% Circuit, 100% Load Factor, Rho=90°C.

*CONDUIT: Three cables in isolated conduit in air 90°C Conductor Temperature, 40° Ambient. For other installation conditions, refer to the National Electrical Code.

NOTES: 1 CPE, Neoprene or Hypalon jacket may also be supplied.

3 Cables may be direct buried where NEC jurisdiction applies if installed in a system with a grounding conductor that is in close proximity and conforms with NEC 250-51.

DESCRIPTION: Stranding annealed copper conductor, conductor shield, ethylene propylene rubber (EPR) insulation, semi-conductor shield, copper tape shield, black polyvinyl chloride jacket.

APPLICATION: For use in power circuits up to 15KV when installed in accordance with NEC requirements. May be installed in conduit, cable tray (250 MCM and larger), underground duct, and aerially (when messenger supported). UL listed as type MV-90 for wet and dry locations. Also complies with IPEA Pub. No. S-68-516.

THE ABOVE DATA IS APPROXIMATE AND SUBJECT TO NORMAL MANUFACTURING TOLERANCES.



thermocouple wire & cable

Thermocouple Extension Cable - 105° C PVC

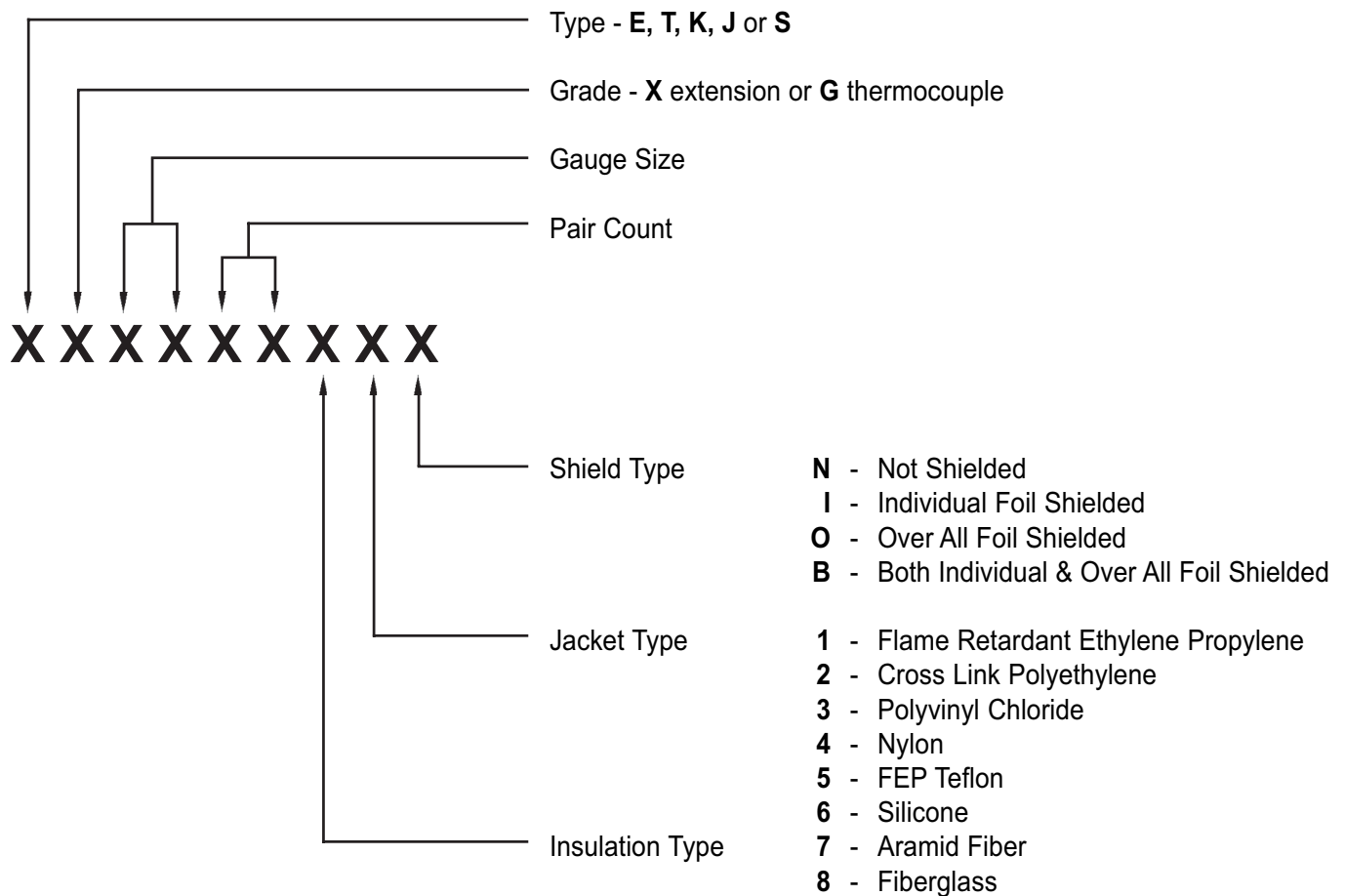
Specifications:

Solid alloy wire matched and calibrated to ISA specification No. RP 1.1-3 and ANSI circular MC 96, 1-1975. Extruded ANSI color coded PVC insulation. Twisted pair construction to minimize magnetic noise. Each conductor (multipair cables) printed with a pair number at one inch intervals for positive identification. Numbers are printed alternately and inverted. When shielded, polyester supported aluminum tape shield and tinned copper drain wire are provided for maximum electrostatic noise and crosstalk rejection. Nylon rip cord provided under jacket to facilitate jacket stripping. ANSI color coded PVC jacket, passes or exceeds IEEE 383 70,000 BTU Flame Test. Multipair cables incorporate a No. 22AWG communications wire color coded orange. An economical, general purpose, flame retardant construction possessing excellent chemical and abrasion resistance. UL listed under Subject 13. Complies with NEC Article 725, Type PLTC. Available in long continuous lengths.

Application:

Tri-rated cable - can be used in cable tray, conduit or for direct burial. Used to interconnect thermocouples to temperature recording apparatus.

Thermocouple Part Numbers



Toll Free...MI - 877-789-1626

TN - 877-853-8106

thermocouple wire & cable

Insulation and Jackets

Four Star Wire & Cable, Inc. standard line of thermocouple wire and cable is available in a wide range of insulating and jacketing materials suiting the most demanding environmental conditions.

Chart (1) gives the most popular combinations of materials and the characteristics of each. Special situations may require other types of materials. Contact your Four Star Wire & Cable, Inc. sales representative to help in determining the exact choice for your application.

General Characteristics Of Thermocouple Wire Insulations

Chart No. 1

Insulation	Jacket	Temp. C° (F°)			Mechanical Properties		Chemical Properties (Resistance to)			
		Cont.	Inter.	Flame	Abrasion Res.	Flexibility	Solvents	Acids	Bases	Moisture
Felted Asbestos	Asbestos Braid	538 (1000)	760 (1400)	E	F/G	G	E	P	E	P
Felted Asbestos	Glas Braid with Silicone	482 (900)	538 (1000)	E	F/G	G	E	E	E	F/G (to 204°C)
Mylar/Felted Asbestos	Asbestos Braid	538 (1000)	760 (1400)	E	F/G	G	E	P	E	F
Nylon	Nylon	120 (248)	-	P	E	G	G	P	E	F/G
PVC	PCV	105 (221)	-	G	G	G	F	G	G	G
Teflon (FEP)*	Teflon (FEP)*	205 (400)	-	E	E	G	E	E	E	E
Glass Braid with Silicone	Glass Braid with Silicone	480 (900)	538 (1000)	E	F/G	G	E	E	E	F/G (to 204°C)
Refrasil**	Refrasil**	871 (1600)	982 (1800)	E	P	F/G	E	E	E	P
Kapton*	Kapton*	316 (600)	427 (800)	E	E	E	E	E	E	E
Teflon (TFE-Tape)*	Teflon (TFE-Tape)*	260 (500)	-	E	E	E	E	E	E	E
PVC	Nylon	105 (221)	-	G	E	G	F	P	E	G
Tefzel*	Tefzel*	150 (302)	-	E	E	E	E	E	E	E
Ceramic Fiber	Ceramic Fiber	1427 (2600)	-	E	G	E	G/E	F/G	G/E	G/E
High Temperature Glass Braid with Silicone	High Temperature Glass Braid with Silicone	649 (1200)	-	E	F/G	G	E	E	E	F/G (to 204°C)

* Trademark, Du Pont Co.
** Trademark, H.I. Thompson Co.

E = Excellent, G = Good, F = Fair, P = Poor

ANSI/ISA

COMPLIANCE

The key to precise temperature measurement is consistency. Establishing very exacting standards of calibration, ANSI, the American National Standards Institute and ISA, Instrument Society of America have been able to govern the specification and manufacturing of thermocouple and extension wire and cable. These standards quality control techniques and require certification by the manufacturer to ensure performance.

Grade	Type	ISA/ANSI COLOR CODE				Overall Jacket	
		Extension	Positive Wires	Negative Wires	Grade	Extension	
J	JX	Iron	White	Construction Red	Brown	Black	
K	KX	Chrmell	Yellow	Alumel Red	Brown	Yellow	
T	TX	Copper	Blue	Construction Red	Brown	Blue	
E	EX	Chrome	Purple	Constantan Red	Brown	Purple	
-	RX,SX	Copper	Black	Alloy #11 Red	-	Green	



connectors

For many years, Four Star Wire & Cable and Emerson Network Power Connectivity Solutions have brought to you an array of high quality products. These pages represent only a portion of these great products, so if there are any additional requirements that you may have, Four Star will be able to assist you.
With Emerson Network Power...Consider It Solved.



Part No.
F27-9000 (BNC)
F27-9002 (BNC)
Crimp BNC (M)
2 Piece, Solderless

Cable Type
RG-59, 62
RG-6

Tool No.
F24-9859P
F24-321P



Part No.
F25-7191
Crimp-On F-11 (M)
1 Piece, for Standard RG-11 Cable

Cable Type
RG-11

Tool No.
F24-7711P



Part No.
F25-7030 (F)
Crimp-On F-59ALM (M)

Cable Type
RG-59

Tool No.
F24-8866P



Part No.
F27-9103
Crimp BNC (M)
3 Piece, Commercial-Mil

Cable Type
RG-59 & 62 Teflon

Tool No.
F24-8860P



Part No.
F25-7032 (F)
Crimp-On F-56ALM (M)

Cable Type
RG-6

Tool No.
F24-8866P



Part No.
F25-7049
Crimp-On F-59 (M)
for Teflon/Plenum

Cable Type
RG-59 Cable

Tool No.
F8860P



Part No.
F25-7034
Crimp-On F-56ALX (M)

Cable Type
RG-6 Quad-Shield Cable.

Tool No.
F24-8866P



Part No.
F27-9009
F27-9209
Crimp BNC (M)
2 Piece, Solderless

Cable Type
RG-59, 62TFE
RG-6TFE

Tool No.
F24-9858P
F24-9858P



Part No.
F27-9293
Crimp BNC (M)
3 Piece, Commercial-Mil

Cable Type
RG-11

Tool No.
F24-7712P



Part No.
F25-7047
Crimp-On F-56 (M)
for Teflon/Plenum

Cable Type
RG-6 Cable.

Tool No.
F24-8866P



Part No.
F25-7190
Crimp-On F-11 (M)
2 Piece, with Separate 1/5" Ring.

Cable Type
RG-11

Tool No.
F24-7712P

Toll Free...MI - 877-789-1626
TN - 877-853-8106

tools



F24-7711P
Deluxe Hex Crimping Tool
for RG-8, 11 & 213.
Hex Sizes: .10", .322", .448"



F24-9858P RG-58, RG-59TFE &
F24-9859P RG-59, RG-62
Standard Series Ratchet Crimping Tools
This series of tools offers a wide selection
of interchangeable dies, a high quality
steel frame with a full cycle ratchet mechanism
and a quick release safety latch.
Crimps 2pc. BNC and TNC connectors.



F24-7712P
Deluxe Hex Crimping Tool
for large O.D. Cables, RG-6,
RG-11 & UHF RG-8.
Hex Sizes: .102", .359", .406"



F24-8866P
'F' Ratchet Crimping Tool
Crimps RG-59, RG-6, and
RG-Quad Shield 'F' type
CATV connectors. Features
adjustable crimp pressure
and quick release safety latch.
Hex Sizes:
.255", .324", .354"



F24-8860P
Ratchet Crimping Tool
for 3-Piece Crimp Connectors.
Offset die with 3 crimp sizes for Pins &
Connector
Ferrule including RG-58 & 59TFE Cable.
Features adjustable crimp pressure and
quick release safety latch.



F24-7739P
3-Step Cable Stripper
with non-adjustable replacement
blades RG-8, 11 & 213.

adapters



F25-7430
In-Line Splice
BNC (F) to BNC (F)



F27-8141
BNC T Adapter
3 Female (F-F-F)



F27-8120
BNC (F) to UHF (M)



F27-8140
BNC T Adapter
1 Male, 2 Female (F-M-F)



F27-8110
BNC (F) to RCA (M)



F25-7530
'F' (F) to RCA (M)



F25-7510
BNC (M) to RCA (F)



F25-7420
BNC (M) to UHF (F)



ICC products are consistently rated higher in performance and overall value by industry installers. Our stringent quality control procedures assure that ICC products have been inspected and/or tested to comply with FCC, TIAA and UL standards. With tens of millions of voice and data drops installed across thousands of enterprises, schools and institutions, ICC continues to meet the evolving demand for cabling solutions. ICC products have emerged as "the tools of the trade" throughout the industry by supplying superior performance at extremely competitive prices. Four Star Wire & Cable is proud to be partnered with ICC. If you don't see what you are looking for on these pages, please contact your sales representative.

Voice & Data Modules



CAT 6 HD Connector
IC1078F6xx*
8 Position 8 Conductor, Category 6, RJ-45
*xx=AL (Almond), BK (Black), BL (Blue), GN (Green), GY (Gray), IV (Ivory), OR (Orange), PR (Purple), RD (Red), WH (White), YL (Yellow).



CAT 6 EZ Connector
IC1078L6xx*
8 Position 8 Conductor, Category 6, RJ-45
*xx=AL (Almond), BK (Black), BL (Blue), GN (Green), GY (Gray), IV (Ivory), OR (Orange), PR (Purple), RD (Red), WH (White), YL (Yellow).



CAT 5e Connector
IC1078E5xx*
8 Position 8 Conductor, Category 5e, RJ-45
*xx=AL (Almond), BK (Black), BL (Blue), GN (Green), GY (Gray), IV (Ivory), OR (Orange), PR (Purple), RD (Red), WH (White), YL (Yellow).



Voice Connector
IC1076VOxx*
6 Position 6 Conductor, Category 3, RJ-11
*xx=AL (Almond), BK (Black), BL (Blue), GN (Green), GY (Gray), IV (Ivory), OR (Orange), PR (Purple), RD (Red), WH (White), YL (Yellow).



Voice Connector
IC1078V3xx*
8 Position 8 Conductor, Category 3, RJ-45
*xx=AL (Almond), BK (Black), BL (Blue), GN (Green), GY (Gray), IV (Ivory), OR (Orange), PR (Purple), RD (Red), WH (White), YL (Yellow).



ScTP CAT 5e Connector
IC1078S500



Voice Coupler
IC107C8VRxx*
*xx=BK (Black), GY (Gray), IV (Ivory), WH (White).



CAT 5e Coupler
IC107C5Exx*
*xx=BK (Black).



Fiber Optic Adapter
IC107ST2xx*
IC107SC2xx*
GY (Gray), IV (Ivory), WH (White).

Audio & Video Modules



RCA Female to Female Connectors
Gold Plated with colored inserts
PART NUMBER DESCRIPTION
IC107K6Gxx* Black Insert
IC107L6Gxx* Blue Insert
IC107G6Gxx* Green Insert
*xx=AL (Almond), BK (Black), IV (Ivory), WH (White).



RCA Female to IDC Connectors
IDC allows signal transfer over UTP cable. Gold plated with colored inserts
PART NUMBER DESCRIPTION
IC107K8Gxx* Black Insert
IC107L8Gxx* Blue Insert
IC107G8Gxx* Green Insert
*xx=AL (Almond), BK (Black), IV (Ivory), WH (White).



RCA Female to F-Type Connectors
Gold plated with colored inserts
PART NUMBER DESCRIPTION
IC107RFGxx* Red Insert
IC107KFGxx* Black Insert
IC107LFGxx* Blue Insert
*xx=AL (Almond), BK (Black), IV (Ivory), WH (White).



Speaker Connector Gold Binding Post
PART NUMBER
IC107PMGxx*
IC107L8Gxx*
IC107G8Gxx*
*xx=AL (Almond), IV (Ivory), WH (White).



Speaker Connector Gold Banana Jack
PART NUMBER
IC107JMGxx*
*xx=AL (Almond), IV (Ivory), WH (White).



PART NUMBER
IC107BSSBK
DESCRIPTION
Audio Speaker Spring Clip
Color = BK (Black)



S-VHS Connector
PART NUMBER
IC107JMGxx*
DESCRIPTION
S-VHS to IDC
*xx=AL (Almond), IV (Ivory), WH (White), GY (Gray).



PART NUMBER DESCRIPTION
2 GHz IC107B5Gxx* 3GHz IC107B9Gxx*
IC107B5Fxx* IC107B9Fxx*
*xx=AL (Almond), BK (Black), IV (Ivory), WH (White).
Female, Gold
Female, Nickel



BNC Modular Connectors
Feedthrough female-to-female connector used for CCTV and security cameras.
PART NUMBER DESCRIPTION
IC107B3Gxx* 50 Ohm.
IC107BNCxx* 75 Ohm.
*xx=AL (Almond), BK (Black), IV (Ivory), WH (White).

Faceplates



Angled Faceplate
IC107DA1xx* 1 Port Single
IC107DA2xx* 2 Port Single
IC107DA4xx* 4 Port Single
*xx=AL (Almond), IV (Ivory), WH (White), GY (Gray).



Angled Faceplate
IC107AF2xx* 2 Port Single
IC107AF4xx* 4 Port Single
IC107AF8xx* 8 Port Single
*xx=IV (Ivory), WH (White), GY (Gray).



Faceplate w/Station ID Angles
IC107AS2xx* 2 Port Single
IC107AS4xx* 4 Port Single
IC107AS8xx* 8 Port Single
*xx=IV (Ivory), WH (White), GY (Gray).



Faceplate
IC107FO1xx* 1 Port Single
IC107FO2xx* 2 Port Single
IC107FO3xx* 3 Port Single
IC107FO4xx* 4 Port Single
IC107FO6xx* 6 Port Single
*xx=AL (Almond), IV (Ivory), WH (White), GY (Gray).



Faceplate
IC107FD8xx* 8 Port Single
IC107F12xx* 12 Port Single
IC107FT9xx* 9 Port Single
IC107FT4xx* 12 Port Single
*xx=IV (Ivory), WH (White), GY (Gray).



Faceplate w/Station ID
IC107S02xx* 2 Port Single
IC107S03xx* 3 Port Single
IC107S04xx* 4 Port Single
IC107S06xx* 6 Port Single
IC107S08xx* 8 Port Double
IC107ST9xx* 9 Port Triple
*xx=IV (Ivory), WH (White), GY (Gray).



Decorex Faceplate
IC107DFSxx*
1 Insert Opening Single
*xx=AL (Almond), IV (Ivory), WH (White).



Decorex Faceplate
IC107DFDxx*
2 Insert Opening Double
*xx=IV (Ivory), WH (White), GY (Gray).



Decorex Insert
ICRDSDBBPxx* 4 Binding Post
IC107DC2xx* 2 Port & 2 CATV
*xx=IV (Ivory), WH (White), AL (Almond).



Decorex Insert
ICRDSDBBPxx* 4 Binding Post
IC107DC2xx* 2 Port & CATV
*xx=AL (Almond), IV (Ivory), WH (White).



Stainless Steel Faceplate
IC107SF1SSxx* 1 Port Single
IC107SF2SSxx* 2 Port Single
IC107SF3SSxx* 3 Port Single
IC107SF4SSxx* 4 Port Single
IC107SF6SSxx* 6 Port Single
IC107DF4SSxx* 4 Port Double
IC107DF8SSxx* 8 Port Double



Electrical Faceplate
IC106FP2xx* 2 Port Single
IC107DP1xx* 2 Port Insert
IC1074P1xx* 3 Port Insert
*xx=IV (Ivory), WH (White), AL (Almond).

Toll Free...MI - 877-789-1626
TN - 877-853-8106



Wall Plates



Wall Plate w/IDC
ICRDSV05xx*
ICRDSVF0xx*
ICRDS0F5xx*
ICRDS2F5xx*
ICRDSVF5xx*
ICRDSV25xx*
*xx=AL (Almond), IV (Ivory), WH (White).

6P6C & CAT 5e
6P6C & CATV
CAT 5e & CATV
(2) CAT 5e & CATV
6P6C, CAT 5e & CATV
6P6C, CAT 5e & (2) CATV



Wall Plate
IC630E40xx*
IC630E60xx*
IC630E4Gxx*
IC630E44xx*
IC630E66xx*
IC630EG0xx*
IC630EGGXX*
*xx=IV (Ivory), WH (White).

6P4C
6P6C
6P4C & CATV
(2) 6P4C
(2) 6P6C
CATV
(2) CATV



Designer Wall Plate
IC630E40xx*
IC630E60xx*
IC630E4Gxx*
IC630E44xx*
IC630E66xx*
IC630EG0xx*
IC630EGGXX*
*xx=IV (Ivory), WH (White).

6P4C
6P6C
8P8C
(2) 6P4C
(2) 6P6C
CATV
6P4C & CATV



Wall Telephone Faceplate
IC630DB4xx*
IC630DB6xx*
*xx=IV (Ivory), WH (White).



Wall Telephone Faceplate
IC630SS4xx*
IC630SS6xx*
*xx=IV (Ivory), WH (White).

6P4C
6P6C



Wall Telephone Faceplate Stainless Steel
IC630DA4SSxx*
IC630DA6SSxx*

Voice Couplers & Adapters



Voice Modular Adapter
ICMA267D44
ICMA267D66



Voice Modular Adapter
ICMA350A4C
ICMA350A6C



Voice Modular Adapter
ICMA3508DR



D-Sub Modular Adapter
ICDB09TF6C
ICDB09TM6C
ICDB09TF6C
ICDB09TF6C

Female to 6P6C
Male to 6P6C
Female to 8P8C
Male to 8P8C



D-Sub Modular Adapter
ICDB15TF6C
ICDB15TM6C
ICDB15TF6C
ICDB15TF6C

Female to 6P6C
Male to 6P6C
Female to 8P8C
Male to 8P8C



D-Sub Modular Adapter
ICDB25TF6C
ICDB25TM6C
ICDB25TF6C
ICDB25TF6C

Female to 6P6C
Male to 6P6C
Female to 8P8C
Male to 8P8C

Multi Media Faceplates & Boxes



Multi-Media Faceplate
IC108F01xx*
IC108F02xx*
IC108FD4xx*
*xx=IV (Ivory), WH (White), GY (Gray).

1 Port Single
2 Port Single
4 Port Double



Faceplate Bezels
IC108BF1xx*
IC108BF2xx*
IC108BA1xx*
IC108BA2xx*
*xx=IV (Ivory), WH (White), GY (Gray).

1 Port Flat
2 Port Flat
1 Port Angles
2 Port Angles



Furniture Faceplates
IC108UF4xx*
IC107FM3xx*
*xx=IV (Ivory), WH (White), GY (Gray), BK (Black).

4 Port Surface Mount
3 Port w/o ID, Flush Mount



Surface Mount Box
IC108SB1xx*
IC108SB2xx*
IC108SB4xx*
IC108SB6xx*
IC107SB1xx*
IC107SB2xx*
*xx=IV (Ivory), WH (White), GY (Gray).

1 Port w/ID
2 Port w/ID
4 Port w/ID
6 Port w/ID
1 Port Classic
1 Port Classic



Surface Mount Jack
IC625SB4xx*
IC625SB6xx*
IC625SB8xx*
IC625DS4xx*
IC625DS8xx*
w/ Shorting Bar
*xx=IV (Ivory), WH (White).

6P4C
6P6C
8P8C
8P4C w/ Shorting Bar
RJ13X, 4 Cond.



Junction & Mounting Box
ICACSMBSxx*
ICACSMBDxx*
IC107MRSxx*
IC107MRDxx*
*xx=IV (Ivory), WH (White), GY (Gray)

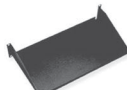
Single, 2 Piece
Double, 2 Piece
Single, 1 Piece
Double, 1 Piece

Rack Shelves & Drawers



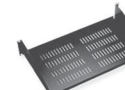
Keyboard Tray
ICCMSRKP10
ICCMSRKS10

Tray, 2U w/ Mouse Tray
Tray, 3U w/o Mouse Tray



Rack Shelf
ICCMSRSF10
ICCMSRSF15
ICCMSRDS20
ICCMSRDS30

10" D. 2RU
15" D. 3RU
20" D. 2RU
30" D. 3RU



Rack Shelf
ICCMSRSV10
ICCMSRSV15
ICCMSRDV20
ICCMSRDV30

10" D. 2RU
15" D. 3RU
20" D. 2RU
30" D. 3RU



Locking Drawer
ICCMSLDWR2
ICCMSLDWR4

17.5" D. 2RU
17.5" D. 4RU



Rack Shelf Heavy Duty
ICCMSHDS20

20" D. 3RU

Cable Management



Metal Ring Panel
ICCMSCMP31
ICCMSCMP32
ICCMSCMP51
ICCMSCMP52

Ring Panel. 1RU
Ring Panel. 2RU
Interbay Panel. 1RU
Interbay panel. 2RU



Blank Panel
ICCMSCMPB1
ICCMSCMPB2
ICCMSCMPB3

Blank 1RU
Blank 2RU
Blank 3RU



Cable Management Ring
ICCMSCMPR1
ICCMSCMPR2
ICCMSCMPR3
ICCMSCMPR4

Single Ring 1.70"
Single Ring 3"
Double Ring 3"
Double Ring 6"

Tools



IC110 & 66 Single Blade Punch Down Tool
ICACSPDT00 Punch Down Tool
w/110 & 66 Blade

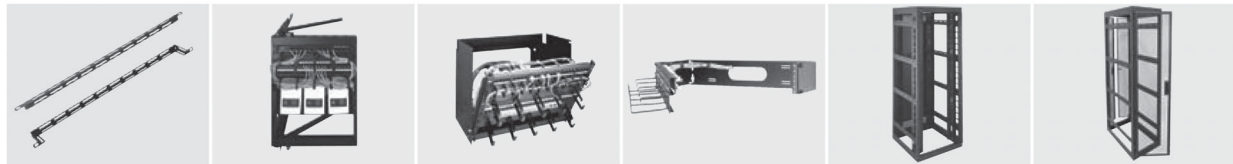


Cable Stripper Tool
ICACSCSUTP UTP Cable Stripper Tool
ICACSCSCTV CATV Cable Stripper Tool





2-Post Open Frame Racks **4-Post Open Frame Racks** **Vertical Cable Managers** **Vertical Cable Lacing Strips** **Horizontal Cable managers** **Cable Ladders**



Horizontal Lacer Bars **Swing Frame Rack** **Pivoting Panel Mount & Vertical Panel Mount** **Hinged Panel Mount Wall Mount Rack** **Gangable Cable Management Rack** **Server Enclosures**



Gangable Rack Enclosures **Raised Floor Enclosure Support System™** **Roll Out Rotating System** **Ceiling Mount Cabinet** **Cable Safe Data Wall Cabinet™** **DWR Series Wall Cabinet**



Pivoting Floor Mount Cabinet **Tilt Out & Horizontal Equipment Cabinet** **WRP/WRS & SPM Series Wall Mount Cabinets** **Rack Lighting** **SignalSafe™ IEC Power Cords** **Vertical Power products**



Multi Mount™ Power Products **Power Distribution Control & Sequencing** **High CFM Rear Doors** **Ultra Quiet Fan Panels** **Fans and Fan Trays** **Security Covers & Accessory Panels**



Vent & Blank Panels **Rackmount LCD Keyboard** **MS/UFA Shelves & Keyboard Sliding Shelves** **Rackshelves** **Rackmount Storage** **Rack Screws & Accessories**

Toll Free...MI - 877-789-1626
TN - 877-853-8106

patch cords and tools



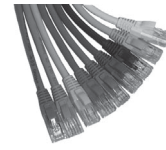
CAT 6A FTP Patch Cord
ICPCSGyyBL
 • Shielded to protect against electromagnetic interference(EMI)
 • 4 UTP 24 AWG stranded, shielded
 • 50 micro-inch gold plated contacts
 • 100% factory tested and verified
 • Slim-line low profile boots



CAT 6 Slim Line Patch Cords
ICPCS601xx* 1ft. 4 UTP, 24 AWG
ICPCS603xx* 3ft. 4 UTP, 24 AWG
ICPCS605xx* 5ft. 4 UTP, 24 AWG
ICPCS607xx* 7ft. 4 UTP, 24 AWG
ICPCS610xx* 10ft. 4 UTP, 24 AWG
ICPCS614xx* 14ft. 4 UTP, 24 AWG
ICPCS620xx* 20ft. 4 UTP, 24 AWG
ICPCS625xx* 25ft. 4 UTP, 24 AWG
 xx* = BK, BL, GN, GY, OR, WH, YL



CAT 5e Slim Line Patch Cords
ICPCS901xx* 1ft. 4 UTP, 24 AWG
ICPCS903xx* 3ft. 4 UTP, 24 AWG
ICPCS905xx* 5ft. 4 UTP, 24 AWG
ICPCS907xx* 7ft. 4 UTP, 24 AWG
ICPCS910xx* 10ft. 4 UTP, 24 AWG
ICPCS914xx* 14ft. 4 UTP, 24 AWG
ICPCS920xx* 20ft. 4 UTP, 24 AWG
ICPCS925xx* 25ft. 4 UTP, 24 AWG
 xx* = BK, BL, GN, GY, OR, WH, YL



CAT 5e Non-Booted Patch Cords
ICPCS501xx* 1ft. 4 UTP, 24 AWG
ICPCS503xx* 3ft. 4 UTP, 24 AWG
ICPCS505xx* 5ft. 4 UTP, 24 AWG
ICPCS507xx* 7ft. 4 UTP, 24 AWG
ICPCS510xx* 10ft. 4 UTP, 24 AWG
ICPCS514xx* 14ft. 4 UTP, 24 AWG
ICPCS520xx* 20ft. 4 UTP, 24 AWG
ICPCS525xx* 25ft. 4 UTP, 24 AWG
 xx* = BK, BL, GN, GY, OR, WH, YL



Telephone Line Cord
ICLC607FSV 7ft. Pin 1 to Pin 6
ICLC614FSV 14ft. Pin 1 to Pin 6
ICLC625FSV 25ft. Pin 1 to Pin 6
 • 6-Conductor



25 - Pair Telco Cable
ICPCSTMMxx* Male to male
ICPCSTFFxx* Female to female
ICPCSTFMxx* Female to male
 • 50-Pin telso connectors
 xx* = 05, 10, 15, 25, 50, 75, 100 feet in length



Telephone Plug
ICMP8P8CFT 8P8C flat stranded
ICMP8P8SRD 8P8C oval solid
ICMP6P4CFT 6P4C flat stranded
ICMP6P6SRD 6P6C oval solid
 • 100 pcs./bag



110 Patch Plug
ICMP1101PR 1-Pair, CAT 5e
ICMP1102PR 2-Pair, CAT 5e
ICMP1103PR 3-Pair, CAT 5e
ICMP1104PR 4-Pair, CAT 5e
 • 6-Conductor



Single Blade Punch-Down Tool
ICACSPDT00 Tool with blades
ICACS110RB 110 blade
ICACS066RB 66 blade



Handheld Termination Aid
ICACSHA01 Termination aid
 • Helps terminate all ICC modular connectors



Economy Stripper Tool
ICACSTSUS1 Cable stripper
 • For stripping UTP and STP cables



Delux Stripper Tool
ICACSTSUCD Cable stripper
 • For stripping coaxial, UTP, STP and flat telephone cables



Jack Punch-Down Tool
ICACSPDT04 Tool with blades
ICACS8WUEZ 110 blade
ICACS8WUHD 66 blade



Universal Compression Tool
ICACST01U Compression tool
 • For crimping F-type, RCA, BNC, and BNC right angle connectors



Economic Compression Tool
ICACST01E Compression tool
 • For crimping F-type, RCA, and BNC connectors



Cable Tie Fastening Tool
ICACSTCTFE
 For fastening smaller cable ties
 • For thickness up to 0.06"
 • For widths from 0.09" to 0.19"



Cable Tie Fastening Tool
ICACSTCTFD
 For fastening larger cable ties
 • For thickness up to 0.09"
 • For widths up to 0.37"



Nylon Cable Ties
ICACSS04NL 4 in., 18 lbs.
ICACSS55NL 5.5 in., 18 lbs.
ICACSS08NL 8 in., 18 lbs.
 • 100 pcs./bag



Nylon Cable Ties
ICACSM06NL 6 in., 40 lbs.
ICACSM85NL 8.5 in., 40 lbs.
ICACSM12NL 12 in., 40 lbs.
 • 100 pcs./bag



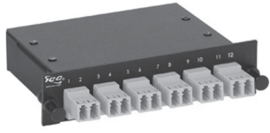
Velcro® Cable Tie
ICACSV08xx* 8 in., 10pcs/bag
ICACSV12xx* 12 in., 10pcs/bag
 xx* = BK, BL, GN, GY, IV, OR, WH, YL
ICACSV75xx* Bulk, 75 ft. roll
 xx* = BK, BL



Compression Connectors
ICRDSAV01x* F-type connector, RG-6 x*Qty (F=20 Pack, C=100 Pack)
ICRDSAV04x* F-type connector, RG-6Q x*Qty (F=20 Pack, C=100 Pack)
ICRDSAV59x* F-type connector, RG-59 x*Qty (F=20 Pack, C=100 Pack)
ICRDSR61xx* RCA connector, RG-6 xx* = color band (RD, GN, BL, WH, YL, BK)
ICRDSR64xx* RCA connector, RG-6Q xx* = color band (RD, GN, BL, WH, YL, BK)
ICRDSBxxBC BNC connector xx* = (61=RG-6), (51=RG-59)



fiber optic system



Fiber Optic Plug & Play Cassette
ICFC12ML1G 10G, LC, 6 duplex
ICFC12MLD6 LC, 62.5µm, 6 duplex
ICFC12ML50 LC, 50/125µm, 6 duplex
ICFC12MSS6 SC, 62.5/125µm, 6 simplex
ICFC12MS1G 10G, SC, 6 duplex
ICFC12MSD6 SC, 62.5/125µm, 6 duplex
ICFC12MS50 SC, 50/125µm, 6 duplex



Fiber Optic Rack Enclosure
ICFOR102BK 2-Panel, 1 RMS
 • Holds fiber optics plug and play cassettes
 • Hinged design



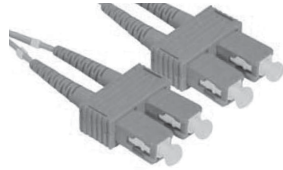
Fiber Optic Enclosure
ICFOR444BK 4 panel, 4-Splice, 4 RMS
ICFORS3096 96-Splice, 3 RMS
ICFORS4192 192-Splice, 4 RMS
 • Includes universal splice trays



Fiber Optic Enclosure
ICFOR306BK 6-Panel, 3 RMS
ICFOR412BK 12-Panel, 3 RMS
ICFOR204BK 4-Panel, 2 RMS
ICFOR103BK 3-Panel, 1 RMS
 • Side out design



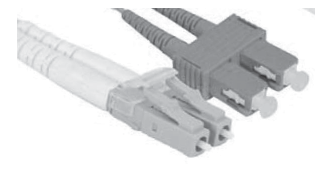
Fiber Optic Enclosure
Economy
ICFOD102BK 2-Panel single door
ICFOD104BK 4-Panel single door
Deluxe
ICFOD202BK 2-Panel dual door
ICFOD204BK 4-Panel dual door



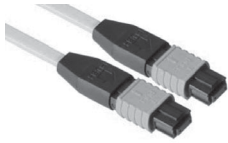
SC-SC Fiber Optic Jumper
Simplex
ICFOJ8G6xx* 10Gig 50/125µm
Duplex
ICFOJ8G7xx* 10Gig 50/125µm
 * Multimode
 *xx = 01,02,03,05 meters in length



LC-LC Fiber Optic Jumper
Simplex
ICFOJ1G6xx* 10Gig 50/125µm
ICFOJ1M2xx* 50/125µm
ICFOJ1M6xx* 62.5/125µm
Duplex
ICFOJ1G7xx* 10Gig 50/125µm
 * Multimode
 *xx = 01,02,03,05 meters in length



LC-SC Fiber Optic Jumper
Simplex
ICFOJ2G6xx* 10Gig 50/125µm
ICFOJ2M6xx* 50/125µm
Duplex
ICFOJ2G7xx* 10Gig 50/125µm
ICFOJ2M3xx* 62.5/125µm
 * Multimode
 *xx = 01,02,03,05 meters in length



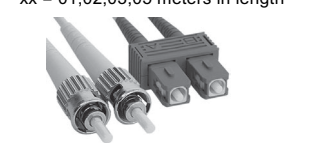
MPO Fiber Optic Jumper
Simplex
ICFOJA5Gxx* 10Gig 50/125µm
ICFOJA55xx* 50/125µm
ICFOJA56xx* 62.5/125µm
 *xx = 05,10,15,20,30,50 meters in length



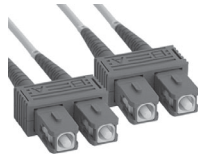
LC-ST Fiber Optic Jumper
Duplex
ICFOJ3M3xx* 62.5/125µm
 • Multimode
 *xx = 01,02,03,05 meters in length



LC-LC Fiber Optic Jumper
ICFOJ1M5xx* Singlemode
ICFOJ3M3xx* Multimode
 • Duplex 62.5/125µm
 *xx = 01,02,03,05 meters in length



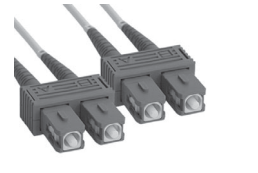
SC-ST Fiber Optic Jumper
ICFOJ9C4xx* Simplex
ICFOJ9C5xx* Duplex
 • Singlemode
 *xx = 01,02,03,05 meters in length



Singlemode Fiber Optic Jumper
ICFOJ8C4xx* SC-SC, simplex
ICFOJ8C5xx* SC-SC, duplex
ICFOJ7C4xx* ST-ST, simplex
ICFOJ7C5xx* SC-SC, simplex
 *xx = 01,02,03,05 meters in length



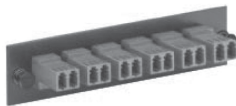
ST-ST Fiber Optic Jumper
Simplex
ICFOJ7C2xx* 62.5/125µm
ICFOJ7C6xx* 50/125µm
Duplex
ICFOJ7C3xx* 62.5/125µm
ICFOJ7C7xx* 50/125µm
 • Multimode
 *xx = 01,02,03,05 meters in length



SC-SC Fiber Optic Jumper
Simplex
ICFOJ8C2xx* 62.5/125µm
ICFOJ8C6xx* 50/125µm
Duplex
ICFOJ8C3xx* 62.5/125µm
ICFOJ8C7xx* 50/125µm
 • Multimode
 *xx = 01,02,03,05 meters in length



SC-ST Fiber Optic Jumper
Simplex
ICFOJ9C2xx* 62.5/125µm
ICFOJ9C6xx* 50/125µm
Duplex
ICFOJ9C3xx* 62.5/125µm
ICFOJ9C7xx* 50/125µm
 • Multimode
 *xx = 01,02,03,05 meters in length



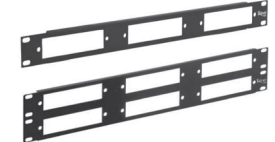
LC-LC Fiber Optic Adapter Panel
ICFOPL16BK LC to LC
 • Loaded panel with 6-duplex LC adapters, ceramic sleeve



SC-SC Fiber Optic Adapter Panel
ICFOPS16BK 6 Simplex, metal
ICFOPS26BK 6 Simplex, ceramic
ICFOPS16BK 6 Duplex, metal
ICFOPS26BK 6 Duplex, ceramic



ST-ST Fiber Optic Adapter Panel
ICFOPT18BK 8 Simplex, metal
ICFOPT28BK 8 Simplex, ceramic
ICFOPT16BK 6 Duplex, metal
ICFOPT26BK 6 Duplex, ceramic



Fiber Optic Blank Patch Panel
ICFORPP1RM 3-Panel, 1 RMS
ICFORPP2RM 6-Panel, 2 RMS
 • Works with adapter panels
 • Fits on standard 19"

Toll Free...MI - 877-789-1626
TN - 877-853-8106

racks & cable management



Distribution Rack
ICCMSR1984 7' Ht.
 • Aluminum 45 RMS
ICCMSR1948 4' Ht.
 • Aluminum 24 RMS



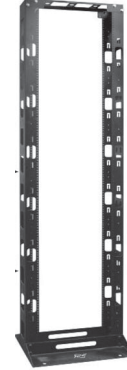
Vertical Finger Duct
ICCMSCA81 78" Ht.
ICCMSCA21 35" Ht.
 • 4" x 5" slotted ducts
 • Side mount design



Vertical Duct Panel
ICCMSCA82 78" Ht.
ICCMSCA22 35" Ht.
 • 4" x 5" slotted ducts
 • Center mount



Vertical Duct Panel
ICCMSCA83 78" Ht.
ICCMSCA23 35" Ht.
 • 4" x 5" slotted ducts
 • Side mount design



Cable Management Rack
ICCMSMRH7 78" Ht., 7' Ht., 44 RMS



Wall Mount Bracket
ICCMSHB1RS 1.75" H x 19" W, 1 RMS
ICCMSHB2RS 3.5" H x 19" W, 2 RMS
ICCMSHB3RS 5.25" H x 19" W, 3 RMS
ICCMSHB4RS 7" H x 19" W, 4 RMS
ICCMSHB6RS 10.5" H x 19" W, 6 RMS



Wall Mount Vertical Hinged Bracket
ICCMSVHB06 12.75" H x 12" W, 6 RMS
ICCMSVHB08 16.25" H x 12" W, 8 RMS
ICCMSVHB18 16.25" H x 18" W, 8 RMS



Wall Mount Swing Gate Rack
ICCMSGR21 27" H x 20.5" W, x 19" D 12 RMS
ICCMSGR22 41" H x 20.5" W, x 19" D 20 RMS



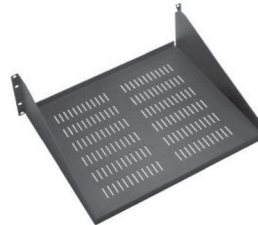
Wall Mount Racks
ICCMSWMR08 17.75" H x 19.75" W, x 18" D 8 RMS
ICCMSWMR15 30" H x 19.75" W, x 18" D 15 RMS
ICCMSWMR30 56.25" H x 19.75" W x 18" D, 30 RMS



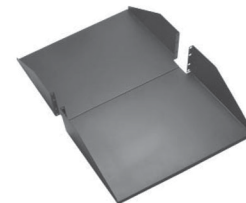
Keyboard Tray
ICCMSRKP10 2 RMS with shelf
ICCMSRKS10 3 RMS
 • Includes #12 rack screws



Single Rack Shelf
ICCMSRSF10 2 RMS, 10" deep
ICCMSRSF15 3 RMS, 15" deep
 • Includes #12 rack screws



Vented Rack Shelf
ICCMSRSV10 2 RMS, 10" deep
ICCMSRSV15 3 RMS, 15" deep
ICCMSRSV20 2 RMS, 20" deep
ICCMSRSV30 3 RMS, 30" deep
 • Includes #12 rack screws



Double Rack Shelf
ICCMSRDS20 2 RMS, 20" deep
ICCMSRDS30 3 RMS, 30" deep
ICCMSHD520 Heavy Duty, 3 RMS
 • Includes #12 rack screws



1.70" Cable Management Ring
ICCMSMPR5 Single, vertical
ICCMSMPR6 Single, horizontal
 • Includes #12 rack screws



3" Cable Management Ring
ICCMSMPR7 Single, universal
 • Includes #12 rack screws



3" Cable Management Ring
ICCMSMPR8 Double, vertical
 • Includes #12 rack screws



3" Cable Management Ring
ICCMSMPR9 Double, horizontal
 • Includes #12 rack screws



Ladder Rack Runway
ICCMSLST05 5ft., runway
ICCMSLST10 10ft. runway
 • Supports horizontal running cable



Ladder Rack Runway
ICCMSLFT90 90° Flat Turn
 • Used to change vertical running cable to horizontal direction



Ladder Rack Runway Corner
ICCMSLIR90 90° Inside Corner
ICCMSLOR90 90° Outside Corner
 • Used to change vertical running cable to horizontal direction



Ladder Rack Runway Corner
ICCMSMPR1 1.70" Single
ICCMSMPR2 3" Single
ICCMSMPR3 3" Double
ICCMSMPR4 6" Double
 • Vertical cable management



patch panels & cross-connect



CAT 6 Patch Panel
ICMPP02460 24 Port, CAT 6, 1 RMS
ICMPP04860 48 Port, CAT 6, 2 RMS
ICMPP0246C 24 Port, CAT 6c, 1 RMS
ICMPP0486C 48 Port, CAT 6c, 2 RMS
 • CAT 6 performance certified



CAT 5e Patch Panel
ICMPP0245E 24 Port, CAT 5e, 1 RMS
ICMPP0485E 48 Port, CAT 5e, 2 RMS
ICMPP0725E 72 Port, CAT 5e, 3 RMS
ICMPP0965E 96 Port, CAT 5e, 4 RMS
 • With rear 110 IDC for fast termination
 • Exceeds TIA/EIA CAT 5e standards
Telco Patch Panel



Multimedia Flush Mount Patch Panel
IC107BP012 12 Port, 1 RMS
IC107BP016 16 Port, 1 RMS
IC107BP024 24 Port, 2 RMS
IC107BP032 32 Port, 2 RMS
IC107BP048 48 Port, 3 RMS
IC107BP064 64 Port, 4 RMS
 • Customized with modular connectors



Multimedia Flush Mount Patch Panel
IC107BP241 24 Port, 1 RMS
IC107BP482 48 Port, 2 RMS
IC107BP723 72 Port, 3 RMS
IC107BP964 96 Port, 4 RMS
 • Accepts HD modular Connectors
Metal Cable Management Panel



Cable Management Panel
ICCMSCMA31 Ring Panel, 1 RMS
ICCMSCMA32 Ring Panel, 2 RMS
ICCMSCMA51 Interbay panel, 1 RMS
ICCMSCMA52 Interbay panel, 2 RMS
ICCMSCMC01 Panel cover, 1 RMS
ICCMSCMC02 Panel cover, 2 RMS



Blank Panel
ICCMSCMPB1 1.75" H x 19" W, 1 RMS
ICCMSCMPB2 3.5" H x 19" W, 2 RMS
ICCMSCMPB3 5.25" H x 19" W, 3 RMS
 • Fills open space between panels



CAT 6A Patch Panel
ICMPP02460 FTP, 24-Port, 1 RMS
 • For use with CAT 6A FTP connectors
 • Provides shielding against EMI
ICMPP04860 UTP, 24-Port, 1 RMS
 • For use with CAT 6A UTP connectors
 • Minimizes Alien Crosstalk (AXT)



ICMPP024T2 24 Port, 6P2C, 1 RMS
ICMPP048T2 48 Port, 6P2C, 2 RMS
ICMPP024T4 24 Port, 6P4C, 1 RMS
ICMPP048T4 48 Port, 6P4C, 2 RMS
ICMPP024T6 24 Port, 6P6C, 1 RMS
ICMPP048T6 48 Port, 6P6C, 2 RMS
 • Integrated rear male telco connectors



USOC Patch Panel
ICMPP024U4 24 Port, 6P4C, 1 RMS
ICMPP024U6 24 Port, 6P6C, 1 RMS
ICMPP048U4 48 Port, 6P4C, 2 RMS
ICMPP048U6 48 Port, 6P6C, 2 RMS
ICMPP096U4 96 Port, 6P4C, 4 RMS
ICMPP096U6 96 Port, 6P6C, 4 RMS
 • High density voice applications



ICCMSCMP31 Ring Panel, 1 RMS
ICCMSCMP32 Ring Panel, 2 RMS
ICCMSCMP51 Interbay panel, 1 RMS
ICCMSCMP52 Interbay panel, 2 RMS
ICCMSCMP41 Ring & Clip panel, 1 RMS
ICCMSCMP42 Ring & Clip panel, 2 RMS
 • High density voice applications



Horizontal Finger Duct Panel
ICCMSCMA61 Dual Ducts, 1 RMS
ICCMSCMA62 Dual Ducts, 2 RMS
ICCMSCMA41 Front Ducts, 1 RMS
ICCMSCMA42 Front Ducts, 2 RMS



110 Patch Panel
IC110RM100 100-Pair, 1 RMS
IC110RM200 200-Pair, 2 RMS
IC110RMCMB 110 Cable Management Panel, 1 RMS



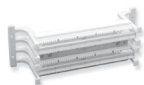
Data Vertical Patch Panel
ICMPP12V60 CAT 6 110-type
ICMPP12V6C CAT 6c HD
ICMPP12V5E CAT 5e 100-type
 • 12-Port, Vertical
 • Designed to be wall mounted
 • 3.32" W x 10" H
 • Includes 89u mounting bracket with mounting screws



Voice Vertical Patch Panel
ICMPP012U4 12-Port, 6P4C
ICMPP012U6 12-Port, 6P6C
ICMB89D0WH 89D bracket
 • 12-Port, Vertical
 • Designed to be wall mounted
 • 3.32" W x 10" H x 1.88" D
 • Includes mounting bracket



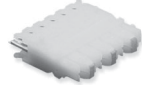
Voice Blank Patch Panel
IC107BP8VB 8-Port
IC107BP12V 12-Port, HD
ICMB89D0WH 89D bracket
 • Accepts any ICC modular connector for true multi-media
 • 3.32" W x 10" H x 2.10" D
 • Includes mounting bracket



110 Wiring Block
IC110WF100 100-Pair with feet
IC110WF300 300-Pair with feet
IC110WF100 100-Pair no feet
IC110WF300 300-Pair no feet
 • includes mounting screws



110 Cable Management Block
IC110CMBNF 100-Pair with feet
 Cable management block with feet
 • includes mounting screws



110 Connecting Block
IC110CB3PR 100-Pair with feet
IC110CB4PR 300-Pair with feet
IC110CB5PR 100-Pair no feet
 • supports CAT 5e data
 • For use with 110 wiring blocks



66 Wiring Block
IC066NB050 50-Pair 66 block
ICMB89B0WH 89B mounting bracket
IC066BC025 Bridge clips 25 pcs.
IC066LS050 Slide on labeling strip, 10 pcs.
IC066CV050 Block cover
 • For voice and CAT 5e data
 • Designed to be wall mounted

Toll Free...MI - 877-789-1626
TN - 877-853-8106

hardware



2 Gang Box
F6350-BLNK



Raised Device Ring
2 Gang 6" Square
F62-1/2



F 52171-S



Conduit Hanger
Batwing
FAPS



2" Bridge Ring
F 1/4-20-2



2" Bridge Ring
F 1/4-20-2



Work Light
FTL105CFW



Distribution Ring
Available 2" 3" 5" 8"
FDST-200



1/4-20 Threaded
Beam Clamp
F1/4-20



J-Hook
FJHK32
2"



4 3/4" J-Hook
ICCMSJHK



3/4" J-Hook
FJHK32-BW2



1 5/16" J-Hook
FJHK32-BW2



4" J-Hook
FJHK64



1 Gang Device
Mount Bracket
FSLR-EV1

datacomm



Recessed Low
Voltage Cable Plates
One Gang
F45-0001



Recessed Low
Voltage Cable Plates
Two Gang
F45-0002



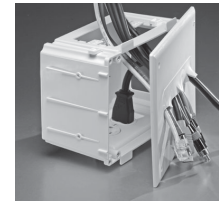
Recessed Low
Voltage Cable Plates
Three Gang
F45-0003



1 3/4" Hole Saw
Wallplate White
F45-0006-WH



Cable Plate w/
Flexible Opening
F45-0017



Recessed Media Box
F45-0010

low voltage mounting plates



1 Gang LV1LP
2 Gang LV2LP



LVH1



LVS1



FBB10



FBB10L



connect this...

a guide to cables, connectors and tools

Four Star Wire & Cable not only stocks millions of feet of cable, we also stock all of the connectors and tools that are essential to complete your job quickly and efficiently. This example of applications will help you decide exactly what is required. It only covers a small portion of what we stock, so if you are unsure, please ask your sales representative and they will be able to provide you with the information that you need.

PART #	DESC.	CRIMP		CONNECTOR
		CONNECTOR	TOOL	
F2828-RIB Coleman # 92074 West Penn # 815	RG59/U PVC	BNC F200-131 F200-123 "F" F200-030	F204-005 F24-8866P IDL30-433	BNC ICM DB6BNCU RCA ICM DB6RCAU "F" ICM DB6U
F2827 F2827 White	RG6/U PVC	BNC F200-131 F200-123 "F" F200-030	F24-9859P F24-8866P IDL30-433	BNC ICM DB6BNCU RCA ICM DB6RCAU "F" ICM DB6U
F2801CU Coleman # 92045 West Penn # 806	RG6/U PVC	BNC F200-139 F200-123 "F" F200-027	F204-005 F24-8866P	BNC ICM DB6BNCU RCA ICM DB6RCAU "F" ICM DB6U

Toll Free...MI - 877-789-1626
TN - 877-853-8106

**Need a little more help in making your job easier?
Don't forget we also carry the right stripper for the job!
F24-7738P**

for RG59, RG62 & RG6

ICM PS59/6/RGB

for RG59, RG6 & RGB

COMPRESSION TOOL		COMPRESSION CONNECTOR		COMPRESSION TOOL	
ICM CPLCRBC-BR	<i>Specify - G, -R, -B (Green, Red, or Blue Handle)</i>	BNC FSNS59BNCU		CPL CCT-SLM	
ICM CPLCRBC-BR		RCA FSNS59U		CPL CCT-SLM	
ICM CPLCRBC-BR					
ICM CPLCRBC-BR	<i>Specify - G, -R, -B (Green, Red, or Blue Handle)</i>	BNC FSN59BNCU		ICM CPL CCT-SLM	
ICM CPLCRBC-BR		"F" FSNS59U		ICM CPL CCT-SLM	
ICM CPLCRBC-BR					
ICM CPLCRBC-BR	<i>Specify - G, -R, -B (Green, Red, or Blue Handle)</i>	BNC FSNS6BNCU		ICM CPL CCT-SLM	
ICM CPLCRBC-BR		RCA FSNS6RCAU		ICM CPL CCT-SLM	
ICM CPLCRBC-BR		"F" FSNS6U		ICM CPL CCT-SLM	



PART #	DESC.	CRIMP		CONNECTOR
		CONNECTOR	TOOL	
F2801DB Coleman # 92061	RG6/U PVC	BNC F200-139 "F" F200-027	F204-005	BNC ICM DB6BNCU RCA ICM DB6RCAU "F" ICM DB6U
F2801CATV Coleman # 92003 West Penn # 6100	RG6/U PVC	BNC F27-9002 "F" F25-7032	F204-005 F24-8866P	BNC ICM DB6BNCU RCA ICM DB6RCAU "F" ICM DB6U
F2801Q Coleman # 92042	RG6/U PVC	"F" F200-033	F204-005	BNC ICM DB6BNCU RCA ICM DB6RCAU "F" ICM DB6U
F2803CU14 West Penn # 1130	RG11/U PVC	BNC F27-9293 "F" F25-7190 F25-7191	F204-009 F204-009	

Toll Free...MI - 877-789-1626
TN - 877-853-8106



COMPRESSION TOOL		COMPRESSION CONNECTOR		COMPRESSION TOOL	
ICM CPLCRBC-BR		BNC FSNS6BNCU		ICM CPL CCT-SLM	
ICM CPLCRBC-BR		RCA FSNS6RCAU		ICM CPL CCT-SLM	
ICM CPLCRBC-BR		"F" FSNS6U		ICM CPL CCT-SLM	
<i>Specify - G, -R, -B (Green, Red, or Blue Handle)</i>					
ICM CPLCRBC-BR		BNC FSNS6BNCU		ICM CPL CCT-SLM	
ICM CPLCRBC-BR		RCA FSNS6RCAU		ICM CPL CCT-SLM	
ICM CPLCRBC-BR		"F" FSNS6U		ICM CPL CCT-SLM	
<i>Specify - G, -R, -B (Green, Red, or Blue Handle)</i>					
ICM CPLCRBC-BR		BNC FSNS6BNCU		ICM CPL CCT-SLM	
ICM CPLCRBC-BR		RCA FSNS6RCAU		ICM CPL CCT-SLM	
ICM CPLCRBC-BR		"F" FSNS6U		ICM CPL CCT-SLM	
<i>Specify - G, -R, -B (Green, Red, or Blue Handle)</i>					
		BNC ICM FS11BNC		ICM CPL CCT-SS59/11	
		"F" ICM FS11V		ICM CPL CCT-SS59/11	



PART #	DESC.	CRIMP		CONNECTOR
		CONNECTOR	TOOL	
RGB3C-PVC	RGB PVC			BNC ICM FSBNC-15RGB RCA ICM FSCRCA15RGB5
RGB5C-PVC	RGB PVC			BNC ICM FSBNC-15RGB RCA ICM FSCRCA15RGB5
RGB5C-TPVC StaRGB	RGB PVC			BNC ICM FSBNC-1RGB RCA ICM FSCRCA1RGB5
F9440 Coleman # 99969 West Penn # 25815	RG59/U PLENUM	BNC F27-9103 F200-138 F200-123 "F" F25-7049	F204-005 F24-8866P IDL30-433	BNC ICM DB59BNCPL2 RCA ICM DB59RCAU "F" ICM DB59U
F9447 SIAMESE Coleman # 993256	RGB59/U PLENUM	BNC F200-123 F200-138 "F" F25-7049	F204-005 F204-005 F24-8866P IDL30-433	BNC ICM DB59BNCCPL2 RCA ICM DB59RCAPL2 "F" ICM DB59U

Toll Free...MI - 877-789-1626
TN - 877-853-8106



COMPRESSION TOOL		COMPRESSION CONNECTOR		COMPRESSION TOOL	
	ICM CPL CCT-SLM	BNC FBNCHR-G		FHR-COMPTOOL	
	ICM CPL CCT-SLM	RCA FRCAHR-G		FHR-COMPTOOL	
	ICM CPL CCT-SLM	BNC FBNCHR-G		FHR-COMPTOOL	
	ICM CPL CCT-SLM	RCA FRCAHR-G		FHR-COMPTOOL	
	ICM CPL CCT-SLM	BNC FBNCHR-G		FHR-COMPTOOL	
	ICM CPL CCT-SLM	"F" FRCAHR-G		FHR-COMPTOOL	
	ICM CPLCRBC-BR	BNC FSNSS59BNCPL		ICM CPL CCT-SLM	
	ICM CPLCRBC-BR	RCA FSNSS59RCAV		ICM CPL CCT-SLM	
	ICM CPLCRBC-BR <i>Specify - G, -R, -B (Green, Red, or Blue Handle)</i>	"F" ICM FS59PL2		ICM CPL CCT-SLM	
	IICM CPLCRBC-BR	BNC FSNSS59BNCPL		ICM CPL CCT-SLM	
	ICM CPLCRBC-BR	"F" ICM FS59PL ICM FS59PL2*		ICM CPL CCT-SLM ICM CPL CCT-SLM	
	ICM CPLCRBC-BR <i>Specify - G, -R, -B (Green, Red, or Blue Handle)</i>	<i>(*Rarely used or needed, but you may encounter a cable with a smaller dielectric)</i>			



PART #	DESC.	CRIMP		CONNECTOR
		CONNECTOR	TOOL	
F9470 Coleman # 921003	RG6/U PLENUM	BNC F27-9209 “F” F25-7047	F204-005 F24-8866P IDL30-433	BNC ICM DB6BNCPL2 RCA ICM DB6RCAPL2 “F” ICM DB6PL2
F9470CUFB Coleman # 921007	RG6/U PLENUM	BNC F27-9209 “F” F25-7047	F204-005 F24-8866P IDL30-433	BNC ICM DB6BNCPL2 RCA ICM DB6RCAPL2 “F” ICM DB6PL2
F9471 Quad Shield Coleman # 921019	RG6/U PLENUM	BNC F27-9209 “F” F25-7047	F204-005 F24-8866P IDL30-433	BNC ICM DB6BNCPL2 RCA ICM DB6RCAPL2 “F” ICM DB6PL2
COL99901	RG11/U PLENUM	BNC F27-9293	F24-7712P	
RGB5C-PLN	RGB PLENUM			BNC ICM FSBNC-1RGB RCA ICM FSCRCA1RGB5

Toll Free...MI - 877-789-1626
TN - 877-853-8106



COMPRESSION TOOL		COMPRESSION CONNECTOR		TOOL	
ICM CPLCRBC-BR		BNC ICM FS6BNCPL2		ICM CPL CCT-SLM	
ICM CPLCRBC-BR		RCA ICM FS6RCAPL2		ICM CPL CCT-SLM	
ICM CPLCRBC-BR <i>Specify - G, -R, -B (Green, Red, or Blue Handle)</i>		"F" ICM FS6PL2		ICM CPL CCT-SLM	
ICM CPLCRBC-BR		BNC ICM FS6BNCPL2		ICM CPL CCT-SLM	
ICM CPLCRBC-BR		RCA ICM FS6RCAPL2		ICM CPL CCT-SLM	
ICM CPLCRBC-BR <i>Specify - G, -R, -B (Green, Red, or Blue Handle)</i>		"F" ICM FS6PL2		ICM CPL CCT-SLM	
ICM CPLCRBC-BR		BNC ICM FS6BNCPL2		ICM CPL CCT-SLM	
ICM CPLCRBC-BR		"F" ICM FS6PL2		ICM CPL CCT-SLM	
ICM CPLCRBC-BR <i>Specify - G, -R, -B (Green, Red, or Blue Handle)</i>				ICM CPL CCT-SLM	
		BNC ICM FS11BNC		ICM CPL CCT-F/11 ICM CPL CCT-SS59/11	
		"F" ICM FS11		ICM CPL CCT-F/11	
ICM CPL CCT-SLM		BNC FBNCHR-G		FHR-COMPTOOL	
ICM CPL CCT-SLM		RCA FRCAHR-G		FHR-COMPTOOL	



west penn cross reference

WPW#	FSW#	PAGE	WPW#	FSW#	PAGE	WPW#	FSW#	PAGE	WPW#	FSW#	PAGE
151	F4802		304	F1843	5	816	F2820	23	3259	F1344	
152	F4803		305	F1853		820	F2811		3260	F1345	
153	F4804		351	F3816	6	840	F2821	23	3262	F1825	4
154	F4806		352	F3817	6	841	F2801	24	3265	F1827	4
220	F3002	1	355	F3818	6	855	F3105	1	3266	F1828	4
221	F3102	1	356	F3819	7	970	F7801	13	3267	F1829	4
222	F3202		357	F3820	6	971	F7822	14	3270	F2659	4
224	F3302	2	358	F3821	6	972	F7823	14	3271	F2660	4
225	F3402	3	359	F3822	6	975	F7806	15	3272	F2661	4
226	F3502	3	360	F3823	7	977	F7807	15	3273	F1812	4
227	F3602	3	369	F3824	6	980	F7802	13	3274	F2662	4
231	F3103	1	370	F3825	6	982	F7818	13	3280	F1835	5
234	F3303	2	371	F3826	6	984	F7819	13	3281	F1837	
240	F3004	1	385	F3810	8	986	F7820	13	3282	F1839	5
241	F3104	1	386	F3811	8	988	F7821	13	3651	F1320	
242	F3204	2	387	F3812	8	990	F7803	14	3652	F1321	
244	F3304	2	388	F3813	8	991	F7808	15	3653	F1322	
245	F3404	3	389	F3814	8	992	F7850	14	3654	F1323	
246	F3504	3	420	F2286		993	F7809	15	3655	F1324	
248	F3604	3	421	F2200		994	F7804	14	3656	F1325	
251	F4602		422	F2201		995	F7810	15	3657	F1326	
252	F4603		423	F2202		998	F7805	14	3751	F1331	
253	F4604		424	F2288		999	F7811	15	3752	F1332	
254	F4606		425	F2204		1975	F7750		3753	F1333	
255	F4609		429	F2287		1977	F7751		3754	F1334	
256	F4612		430	F2212		1980	F7775		3755	F1335	
257	F4616		431	F2213		1982	F7776		3855	F2613	
258	F4619		432	F2216		1984	F7777		25221	F9301	9
259	F4623		433	F2219		1986	F7778		25224	F9309	10
260	F4627		434	F2222		1988	F7779		25225	F9314	10
262	F3202	2	435	F2225		1990	F7780		25234	F9310	10
263	F3207	2	439	F2214		1991	F7755		25241	F9302	9
264	F3209	2	440	F2272		1992	F7781		25244	F9311	10
265	F3212	2	441	F2273		1993	F7756		25245	F9315	10
266	F3215	1	442	F2274		1995	F7760		25270	F9303	9
270	F3106	1	444	F2276		1997	F7761		25291	F9301S	11
271	F3108	1	452	F1872		1999	F7756		25293	F9309S	12
272	F3110	1	570	F3006	1	2010	F3833	7	25294	F9314S	12
273	F3112	1	571	F3008	1	2015	F3832	7	25357	F9323S	11
274	F3115	1	572	F3010	1	2017	F3831	7	25440	F9338S	12
275	F3120	1	573	F3012	1	2018	F3830	7	25510	F9317	11
276	F3125	1	651	F4702		2814	F2826		50980	F9506	16
280	F3305	2	652	F4703		2815	F2827		50982	F9508	16
281	F3307	2	653	F4704		3011	F1824	4	D975	F7806LC	20
282	F3309	2	654	F4706		3152	F1328		D977	F7807LC	20
283	F3312	2	655	F4709		3153	F1329		D980	F7802LC	19
284	F3315	2	656	F4712		3154	F1330		D982	F7818LC	19
288	F3815	6	657	F4716		3241	F1804	4	D990	F7803LC	19
291	F1800	4	751	F4902		3244	F1834	4	D991	F7808LC	20
292	F1822	4	752	F4903		3251	F1336		D993	F780LC	20
293	F1830	5	753	F4904		3252	F1337				
294	F1842	5	754	F4906		3253	F1338				
295	F1852	5	755	F4909		3254	F1339				
296	F1862	5	801	F2803		3255	F1340				
301	F1803	4	804	F2807	23	3256	F1341				
302	F1823	4	814	F2807		3257	F1342				
303	F1833	5	815	F2828	23	3258	F1343				

This cross reference is to be used as a guide only. It does not specify minor constructional or color code differences.

conduit capacity chart

Conduit Trade Size	1/2	3/4	1	1 1/4	1 1/2	2	2 1/2	3	3 1/2	4
I.D. Inches	0.622	0.824	1.049	1.380	1.610	2.067	2.731	3.356	3.834	4.334
Internal Area, In ²	0.304	0.533	0.864	1.496	2.036	3.356	5.858	8.846	11.545	14.753
1 Conductor (53% fill)	0.161	0.283	0.458	0.793	1.079	1.778	3.105	4.688	6.119	7.819
2 Conductor (31% fill)	0.094	0.165	0.268	0.464	0.631	1.040	1.816	2.742	3.579	4.573
Conductors (40% fill)	0.122	0.213	0.346	0.598	0.814	1.342	2.343	3.538	4.618	5.901

Cable OD
Inches

Cable
Area In²

Numbers listed below are based on the 2008 NEC (40% fill) for 3 or more non-lead covered cables.

0.100	0.008	15	26	43	76	104	170	244	375	504	648
0.125	0.012	9	17	27	48	66	109	156	240	322	414
0.150	0.018	6	11	19	33	46	75	108	166	224	288
0.175	0.024	5	8	14	24	34	55	79	122	164	211
0.200	0.031	3	6	10	19	26	42	81	93	126	162
0.225	0.040	3	5	8	15	20	33	48	74	99	128
0.250	0.049	1	4	6	12	16	27	39	60	80	103
0.275	0.059	1	3	5	10	13	22	32	49	66	85
0.300	0.071	1	2	4	8	11	18	27	41	56	72
0.325	0.083	1	1	4	7	9	16	23	35	47	61
0.350	0.096	1	1	3	6	8	13	19	30	41	52
0.375	0.110	1	1	3	5	7	12	17	26	35	46
0.400	0.126	1	1	2	4	6	10	15	23	31	40
0.425	0.142	1	1	1	4	5	9	13	20	27	35
0.450	0.159	1	1	1	3	5	8	12	18	24	32
0.475	0.177	0	1	1	3	4	7	10	17	22	28
0.500	0.196	0	1	1	3	4	6	9	15	20	25
0.525	0.216	0	1	1	2	3	6	8	13	18	23
0.555	0.238	0	1	1	1	3	5	8	12	16	21
0.575	0.260	0	1	1	1	3	5	7	11	15	19
0.600	0.283	0	0	1	1	2	4	6	10	14	18
0.625	0.307	0	0	1	1	2	4	6	9	12	16
0.650	0.332	0	0	1	1	1	4	5	8	11	15
0.675	0.358	0	0	1	1	1	3	5	8	11	14
0.700	0.385	0	0	1	1	1	3	5	7	10	13
0.725	0.413	0	0	1	1	1	3	4	7	9	12
0.750	0.442	0	0	0	1	1	2	4	6	8	11
0.775	0.472	0	0	0	1	1	2	3	5	7	10
0.800	0.503	0	0	0	1	1	2	4	6	8	10
0.825	0.535	0	0	0	1	1	1	3	5	7	9
0.850	0.567	0	0	0	1	1	1	3	5	6	8
0.875	0.601	0	0	0	1	1	1	3	4	6	8
0.900	0.636	0	0	0	1	1	1	3	4	6	8
0.925	0.672	0	0	0	1	1	1	2	4	5	7
0.950	0.709	0	0	0	1	1	1	2	4	5	7
0.975	0.747	0	0	0	1	1	1	1	3	5	6
1.000	0.785	0	0	0	1	1	1	1	3	5	6
1.025	0.825	0	0	0	0	1	1	1	3	4	6
1.050	0.866	0	0	0	0	1	1	1	3	4	5
1.075	0.908	0	0	0	0	1	1	1	3	4	5

- Notice:
1. The reader is cautioned to consult the 2008 NEC for specific information regarding conduit fill.
 2. This Conduit Capacity Chart should only be used as a guide when attempting to estimate conduit fill.
 3. For additional information, the reader should refer to the 2008 National Electrical Code, Chapter 9.

notes

standard terms and conditions of sale

1. FOUR STAR WIRE & CABLE, INC. will hereafter be referred to as FSW.
2. All orders are subject to acceptance of General Offices, in Sterling Heights, Michigan
3. Prices shown on quotations or on acknowledgements of orders are FSW's prices in effect on the date the quotation is made or the order is acknowledged. Shipments will be billed and paid for FSW's price the date shipments are made. Unless otherwise specified, quotations are based on seller's standard commercial domestic packing. Stenographic and clerical errors are subject to correction. Prices are effective when issued and subject to change without notice. Michigan Law shall cover this transaction.
4. Delivery and shipment dates indicated on quotations or on acknowledgements of orders are estimates only and are no guaranteed. In the event that there are any delays in the deliveries, FSW shall not be liable therefore, and the buyer agrees to accept such causes including, but not restricted to, acts of God or of the public enemy, acts of the government in either it's sovereign or contractual capacity, fires, floods, epidemics, quarantine restrictions, strikes, freight embargoes, and unusually severe weather, FSW may cancel buyer's order, in whole or in part, without liability to either party.
5. Payment of each invoice whether or not such invoice covers the entire order shall be made in accordance with the terms of the invoice.
6. If the buyer fails to fulfill the terms of payment of any invoice or if the financial responsibility of the buyer shall become impaired or unsatisfactory assurances of buyer's credit standing are received by FSW. Where such acts or requirements of such governmental authority shall have been complied with, FSW also reserves the right in the case of any of the foregoing events to cancel the order, in such event the buyer shall compensate FSW for any commitments, obligations, expenditures, expenses and costs that FSW may have incurred in connection with the order. Each shipment by FSW shall be considered a separate transaction and if payment is not received within the periods specified herein, FSW may bring a separate suit to recover the contract price of each such shipment. Overdue invoices shall bear a service charge. Buyer agrees to pay FSW's cost of collection of over due invoices, including reasonable attorney's fees.
7. FSW intends to supply cable in continuous lengths per spool or reel put-ups but cannot guarantee that each shipment will contain only continuous length material. If only continuous length material is required, the order must state this. Hook-up wires may be supplied in noncontinuous lengths with the lengths not indicated on the spool. Spools of teflon wire may contain more than one piece. Length may vary plus or minus 10% from length shown, all other lengths are exact.
- 8a. Special constructions and catalog variations represent specific factory production, are not off the shelf shipments and are noncancelable. FSW reserves the right to follow the wire industry practice of shipping within plus or minus 10% of the overall quantity ordered. In the case of special length requirements, and/or special constructions, 15% of the ordered lengths may be shipped in random length reels or spools.
- 8b. FSW will endeavor to make products available as ordered to meet buyer's requirements, but reserves the right to allot its production as it deems best. Buyer agrees that FSW shall not be liable or responsible to buyer to any extent upon failure to supply to buyer any amounts which may be agreed upon from time to time or making only part shipment against any order of buyer.
9. Products furnished hereunder shall be within tolerances, limits and sizes established by industry specifications.
10. FSW warrants that products delivered will be free from defects in material and workmanship. FSW makes no other warranty express or implied warranty or merchantability or fitness for use for a particular purpose which exceeds the foregoing warranty is hereby expressly disclaimed by FSW. Further, FSW shall not be liable for any consequential damages, loss or expenses arising in connection with the sale. Resale, use of or inability to use its products for any purpose whatsoever.
11. Claims of inoperative material must be made in writing within (30) days of delivery of catalog stock items and within ten (10) days of delivery of special constructions and/or catalog variations. Failure to give such notice within the specified time shall constitute and unqualified acceptance and waiver of all claims. FSW's liability and responsibility for inoperative products is specifically limited to the inoperative item or to credit toward the original billing. All replacements by FSW under the provisions of this clause shall be made free of charge, F.O.B. delivery point calls for in the original order. Products for which replacement has been made under the provisions of this clause shall become the property of FSW and shall be returned to FSW by the buyer, F.O.B. buyer's city, provided that FSW has first supplied the buyer with shipping instructions.
12. Under no circumstances are products to be returned to FSW without FSW'S written authorization and FSW reserves the right to scrap any unauthorized returns on a no credit basis. No product may be returned after 60 days after invoicing.
13. FSW shall not be liable for infringement of any patent domestic or foreign, arising out of the use or resale of the products sold hereunder. Further, if such products are manufactured by FSW in accordance with the buyer's instructions or specifications the buyer will indemnify and hold FSW harmless from all liability or expense of any nature or kind what so ever based on or arising out of any claim of infringement of any patent, domestic or foreign.
14. Prices do not include sales, use, excise or similar taxes in addition to the prices specified herein, the amount of any such present or future tax applicable to the sale, of the products hereunder, whether imposed by federal, state or local authorities shall be paid by the buyer.
15. Irrespective of who has paid for same, all tools, molds, dies or fixtures referred to in any quotation or order, shall become and remain the property of FSW. If buyer, for three (3) years does not order goods produced with such equipment, FSW may dispose of it.
16. Where no color is specified, and more than one color is available, FSW will supply color of FSW's discretion. When buyer does not specify put-up, FSW will ship put-up's of FSW's discretion. In the event that there is inconsistency between FSW's terms and conditions as stated herein and the terms and conditions of any order or contract submitted by the buyer, FSW's terms and conditions shall prevail.

*All information in this catalog has been carefully gathered and compiled.
But, we cannot accept any responsibility for any errors, changes or omissions*



Headquarters
6363 Sims Drive Sterling Heights MI 48313
Phone 586-254-0505 • Fax 586-268-3547 • 877-789-1626

West Branch
1931 S M-33 West Branch, MI 48661
Phone 989 - 404 - 7827 • 1 - 877 - 853 - 8106

Nashville
1420 Donelson Pike Ste, A-22 Nashville TN 37217 Phone
615-467-0757 • Fax 615-467-0763 • 877-853-8106

Tech Support • 866-445-4630

fourstarwire.com